



**SCHLETTER**  
The Solar Mounting Group

# PROLINE

PRODUCT SHEET

## SCHLETTER PROLINE

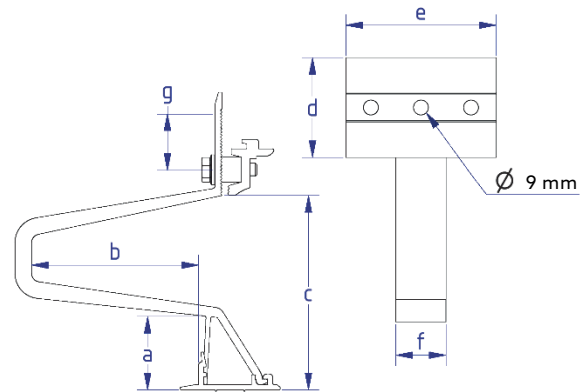
The ProLine combines the highest quality standards with sustainability and cost-effectiveness. The combination of high-quality materials, innovative product development and reduced material usage offers the ideal option for use on tiled and industrial roofs.

ProLine offers a variety of combination options, high flexibility and optimised installation time. New adaptation options and innovative geometries round off the product line. ProLine comprises improved roof hooks, diverse mounting profiles and modernised module clamps as well as numerous accessories. It can also be combined with the Schletter SingleFix system and therefore also used on trapezoidal and sandwich roofs.

### SYSTEM OVERVIEW:

#### Roof hooks

- Material: Aluminium EN AW 6063 - T66
- Mounting with only one wood screw
- Variable bar arrangement
- Pre-assembled clamping part (RapidA)
- Quick installation
- No resting against the roof tile



#### 100020-000 EcoA 45 roof hooks

	a	b	c	d	e	f	
mm	45	99	117	60	90	30	PU: 20



#### 101020-000 RapidA 45 roof hooks

	a	b	c	d	e	f	g	
mm	45	99	117	60	90	30	30	PU: 30



#### 101024-000 RapidA Universal 45 roof hooks

	a	b	c	d	e	f	g	
mm	45	99	117	60	90	30	30	PU: 30

## ROOF HOOK ACCESSORIES:



### Angle attachment for connecting profiles to the ProLine series

#### 119026-121 RapidPro L

	a	b	c	d	e	f	g	h	i	
mm			70	55	36	30		5.5	29	PU:10

<b>973000-075</b> Shim roof hook 2,5/5 mm	PU:100
-------------------------------------------	--------

<b>973000-683</b> Roof hook sealing tape grey TP600 10 m	PU:15
----------------------------------------------------------	-------

### Wood screws

For non-boarded roofs, we recommend at least 80 mm, for roofs with boarding and counter-battens, at least 120 mm!

#### Wood screw with plate head, VA



<b>943208-080</b> 8 x 80	PU:100
--------------------------	--------

<b>943208-100</b> 8 x 100	PU:100
---------------------------	--------

<b>943208-120</b> 8 x 120	PU:50
---------------------------	-------

#### Wood screw with plate head, galvanized

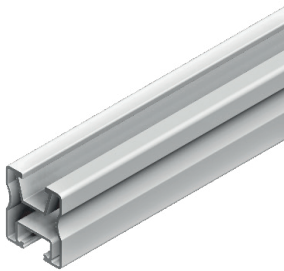
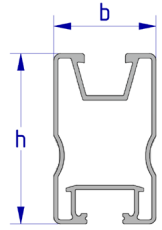
<b>942208-080</b> 8 x 80	PU:50
--------------------------	-------

<b>942208-100</b> 8 x 100	PU:50
---------------------------	-------

<b>942208-120</b> 8 x 120	PU:50
---------------------------	-------

## PROFILES:

- Material: Aluminium EN AW 6063 - T66
- Can be combined with roof hooks, connectors and module clamps of the ProLine series
- Can also be combined with the SingleFix Pro trapezoidal sheet fastener



### Module support profile Pro35

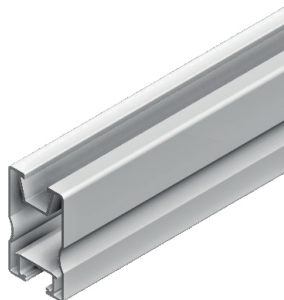
Mechanical connection

Upper: KlickNut Pro  
Lower: Screw channel M10

b	h
30 mm	35 mm

#### Alu blank

<b>120020-04400</b>	4.4 m
<b>120020-05500</b>	5.5 m



### Module support profile Pro50

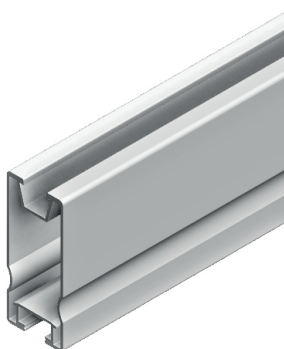
Mechanical connection

Upper: KlickNut Pro  
Lower: Screw channel M10

b	h
30 mm	50 mm

#### Alu blank

<b>120021-03300</b>	3.3 m
<b>120021-04400</b>	4.4 m
<b>120021-05500</b>	5.5 m
<b>120021-006</b>	6.0 m



### Module support profile Pro70

Mechanical connection

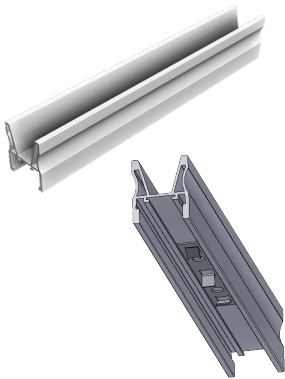
Upper: KlickNut Pro  
Lower: Screw channel M10

b	h
30 mm	70 mm

#### Alu blank

<b>120022-04400</b>	4.4 m
<b>120022-05500</b>	5.5 m

## PROFILE ACCESSORIES:



---

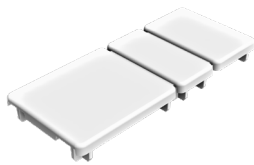
**129200-000** Pro internal connector

---

PU:50

### Internal connector

The integrated position lock means that no additional screw connection is required.



---

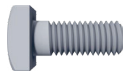
**129200-010\*** Pro plastic end cap

---

PU:100

### Screw and flange nut for connection to ProLine profiles

#### Square head screw, VA



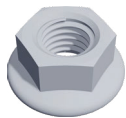
---

**943410-025** M10 x 25

---

PU:100

#### Flange nut M10



---

**943912-010** M10

---

PU:100

\*expected to be available from Q3/2021

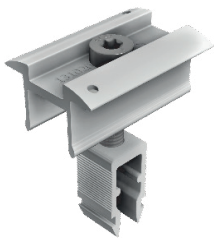
## MODULE CLAMPS:

Due to the improved click channel of the ProLine profiles, only one centre and one end clamp are used for all module frame thicknesses from 30 - 47 mm.

This reduces complexity, simplifies the selection and optimises the warehousing.

### RapidPro module clamps

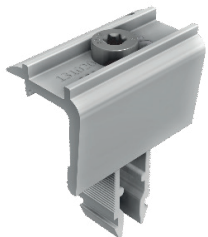
- Clamping length 50 mm
- Material: Aluminium EN AW 6063 - T66
- Clamping height for all modules from 30 - 47 mm
- Integrated earth pin
- Can only be combined with ProLine profiles
- Just one tool: T40 Torx
- Fully pre-assembled
- Quick installation



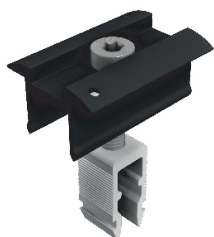
### Alu blank

### Item name

131020-001	RapidPro centre clamp	PU:100
------------	-----------------------	--------

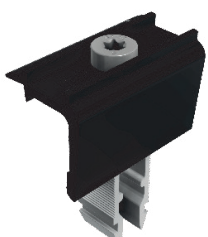


131020-000	RapidPro end clamp	PU:50
------------	--------------------	-------



### Black anodized

131020-901	RapidPro centre clamp	PU:100
------------	-----------------------	--------



131020-900	RapidPro end clamp	PU:50
------------	--------------------	-------

---

<b>Planning aid</b>	Configuration and structural dimensioning with the Schletter Configurator
<b>Structural analysis</b>	Static calculation according to the current country-specific standards (in Germany EN 1991, EC1). Structural analysis systems for dimensioning the number of required fixing points. Please make sure you observe the structural analysis information in each case!

---

More information at: [www.schletter-group.com](http://www.schletter-group.com)

**SCHLETTER SOLAR GMBH**

Alustrasse 1  
83527 Kirchdorf  
GERMANY

[www.schletter-group.com](http://www.schletter-group.com)

