

Photovoltaic module HIT® KURO VBHN325KJ01 / VBHN320KJ01

EN

19.4% module efficiency

Enables reaching a higher output and lower specific cost of installation and balance-of-system than with the same number of standard 60-cell modules.



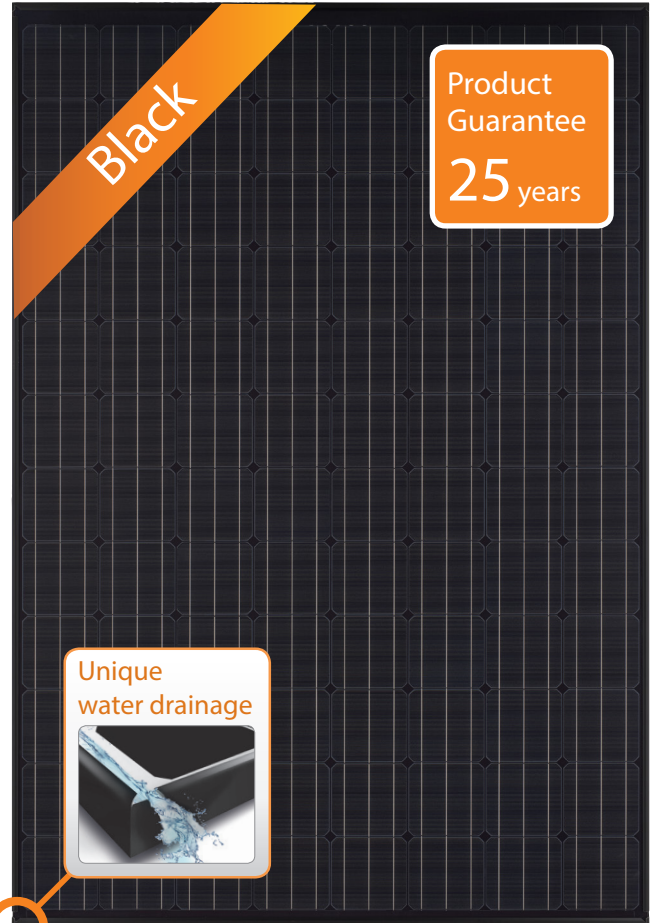
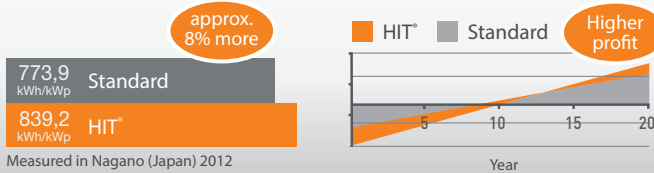
100% Panasonic, 100% HIT®

Proudly featuring Panasonic's original invention, the heterojunction solar cell. With over 1 billion cells produced commercially over 20 years, 25 years after the breakthrough in the development and looking back to over 40 years of experience in solar, Panasonic really offers you a 25-year guarantee you can trust.



More energy, higher profit!

Helping you reach a higher final profit with your PV system!



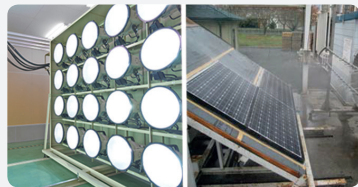
325W/320W

High Efficiency + High Performance at High Temperatures = High Power Generation

QUALITY PROVEN 4 WAYS

1 Guaranteed by Panasonic

- IEC and over 20 Panasonic internal tests
- Vertically integrated own manufacturing (wafer, cell and module)



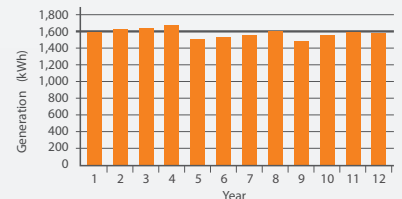
2 Record low claim rate

Less than 0.0040% failure rate after more than 10 years experience in Europe (as of January 2018)

3 Less degradation on the field

12 years actual data prove a reliable and stable performance.

Installation: March 2004
Location: Gloucestershire, UK
Model: HIP-180BE
System size: 1.80 kWp
Tilt: 40 deg.
Direction: South-West



4 3rd party verified

- Lifecycle testing (Long-Term-Sequential-Test) by TÜV Rheinland (tested on VBHN240SE10)
- PID-free (tested by Fraunhofer Institute)

HIT® is a registered trademark of Panasonic Group.

EN

Electrical data (at STC)

	VBHN325KJ01	VBHN320KJ01
Max. power (Pmax) [W]	325	320
Max. power voltage (Vmp) [V]	59.2	58.7
Max. power current (Imp) [A]	5.50	5.46
Open circuit voltage (Voc) [V]	70.9	70.5
Short circuit current (Isc) [A]	5.94	5.89
Max. over current rating [A]	15	15
Power tolerance [%] *	+10/ 0	+10/ 0
Max. system voltage [V]	1000	1000
Solar panel efficiency [%]	19.4	19.1

Note: Standard Test Conditions: Air mass 1.5; Irradiance = 1000W/m²; cell temp. 25°C
 * Maximum power at delivery.

Temperature characteristics

	VBHN325KJ01	VBHN320KJ01
Temperature (NOCT) [°C]	44,0	44,0
Temp. coefficient of Pmax [%/°C]	-0.258	-0.258
Temp. coefficient of Voc [V/°C]	-0.164	-0.164
Temp. coefficient of Isc [mA/°C]	3.34	3.34

At NOCT (Normal Operating Conditions)

	VBHN325KJ01	VBHN320KJ01
Max. power (Pmax) [W]	248.9	245.1
Max. power voltage (Vmp) [V]	56.2	55.9
Max. power current (Imp) [A]	4.43	4.39
Open circuit voltage (Voc) [V]	67.1	66.7
Short circuit current (Isc) [A]	4.80	4.76

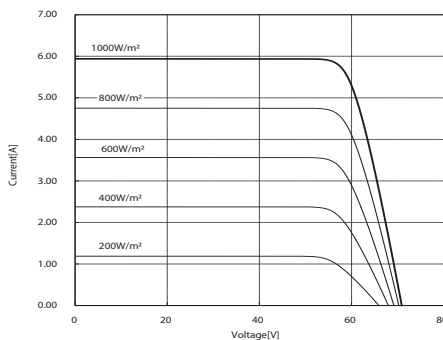
Note: Normal Operating Cell Temp.: Air mass 1.5; Irradiance = 800W/m²;
 Air temperature 20°C; wind speed 1 m/s

At low irradiance (20%)

	VBHN325KJ01	VBHN320KJ01
Max. power (Pmax) [W]	62.8	61.7
Max. power voltage (Vmp) [V]	57.6	57.2
Max. power current (Imp) [A]	1.09	1.08
Open circuit voltage (Voc) [V]	66.6	66.2
Short circuit current (Isc) [A]	1.19	1.18

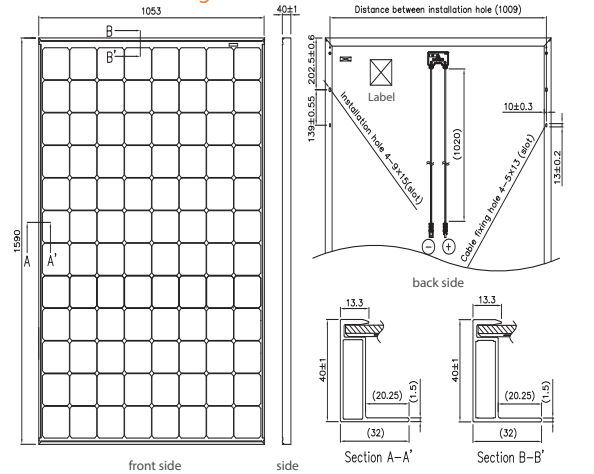
Note: Low irradiance: Air mass 1.5; Irradiance = 200W/m²; cell temp. = 25°C

Dependence on irradiance



Reference data for model VBHN325KJ01 (Cell temperature: 25°C)

Dimensions and weight



weight: 19 kg
 unit: mm
 snow and wind load: 5400 Pa

Guarantee

Power output: 25 years linear
 (1st year 97 %, from 2nd year -0.45 %/year, in 25th year 86.2%)
Product workmanship: 25 years
 (registration necessary on www.eu-solar.panasonic.net, otherwise 15 years apply based on guarantee document)

Materials

Cell material: 5 inch photovoltaic cells
Glass material: AR coated tempered glass
Frame materials: Black anodized aluminium
Connectors type: SMK

Certificates



IEC61215
 IEC61730-1
 IEC61730-2



Please consult your local dealer for more information

CAUTION! Please read the installation manual carefully before using the products.

Used electrical and electronic products must not be mixed with general household waste. For proper treatment, recovery and recycling of old products, please take them to applicable collection points in accordance with your national legislation.



Panasonic Eco Solutions Europe
 Panasonic Electric Works Europe AG

Robert-Koch-Straße 100,
 85521 Ottobrunn, Germany
 Tel. +49 89 45354-1000
 Fax +49 89 45354-2111
info.solar@eu.panasonic.com