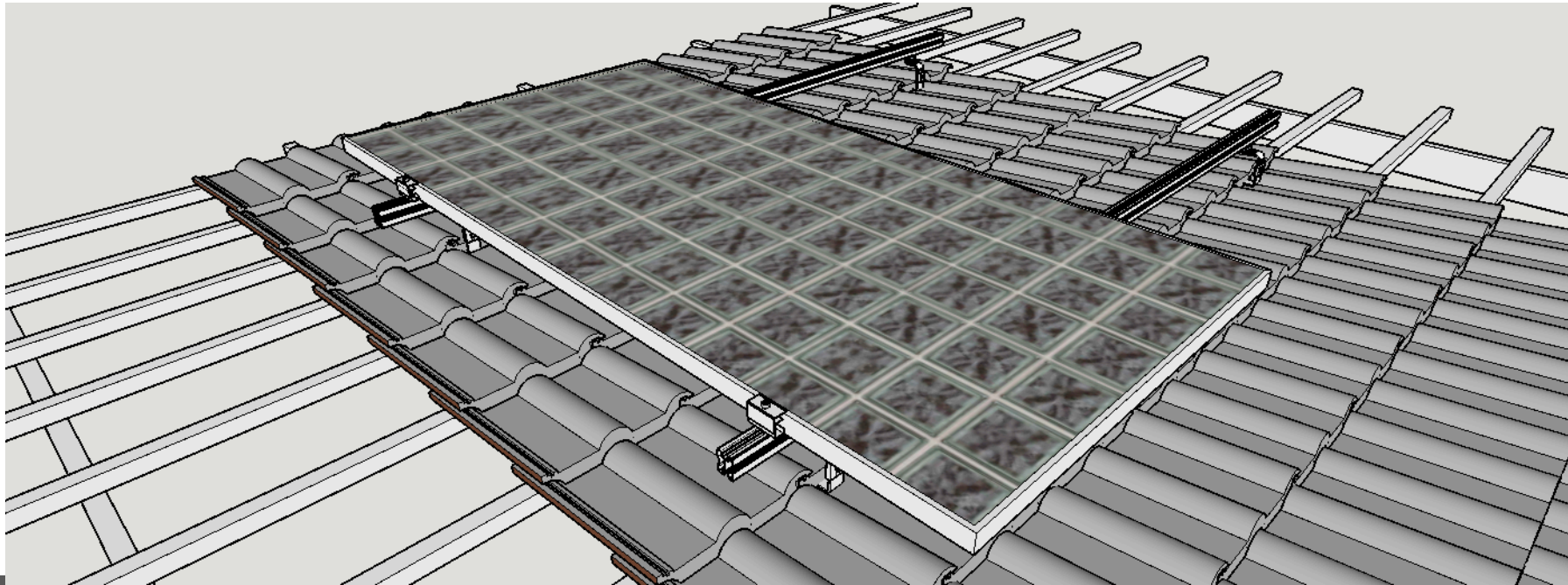
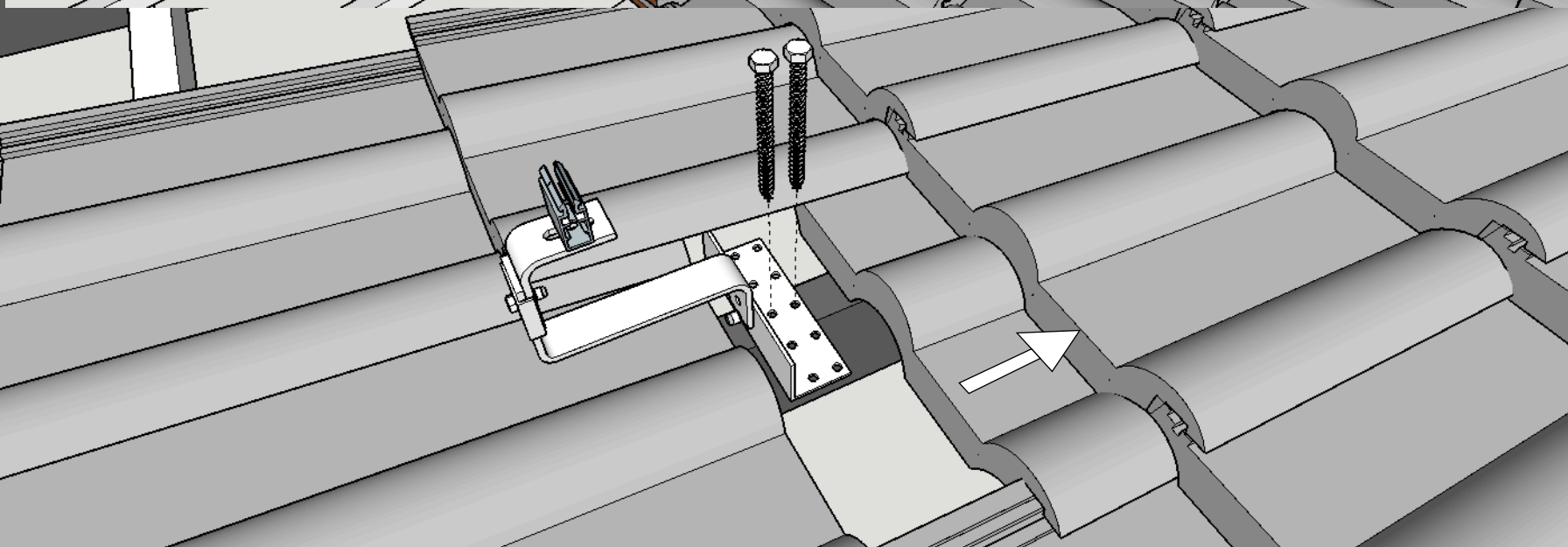


INSTALLATION GUIDE - TILE ROOF FRAMED PANELS

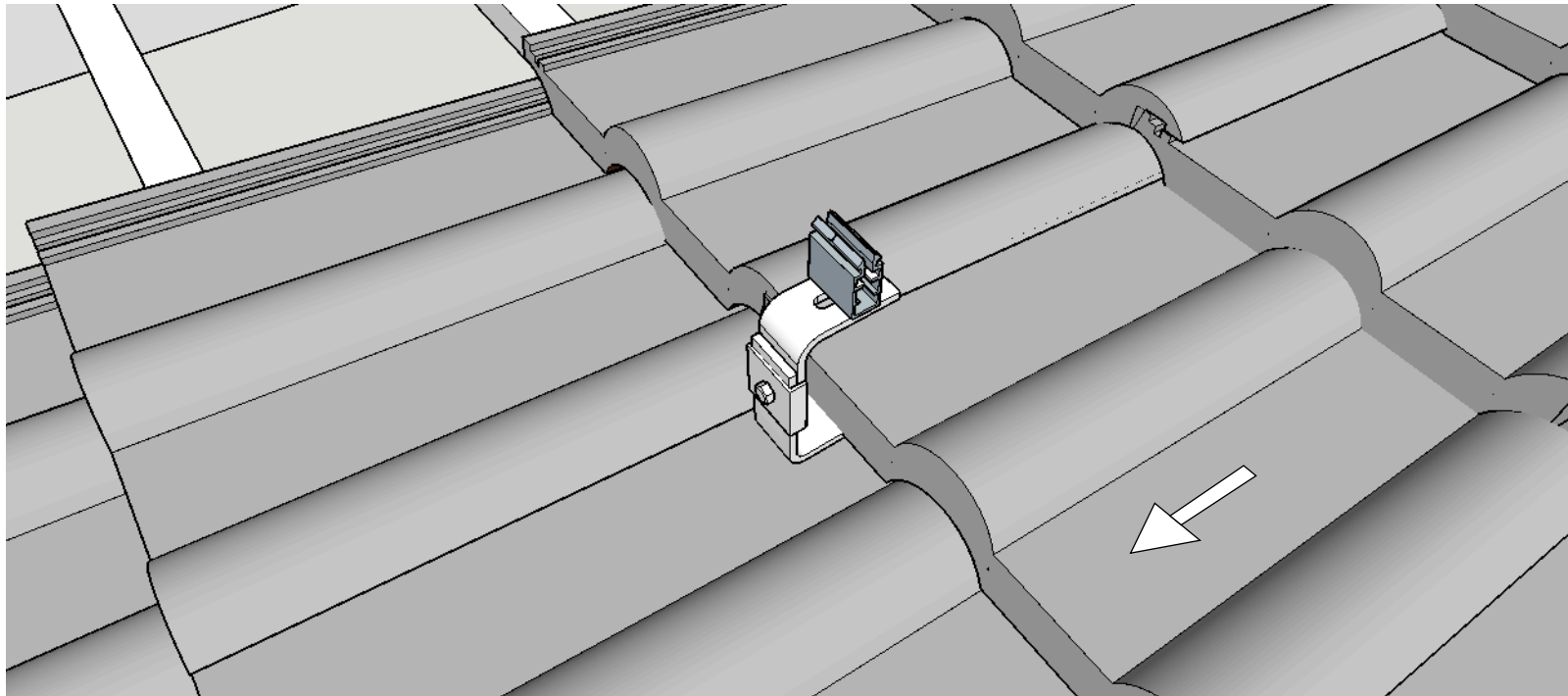
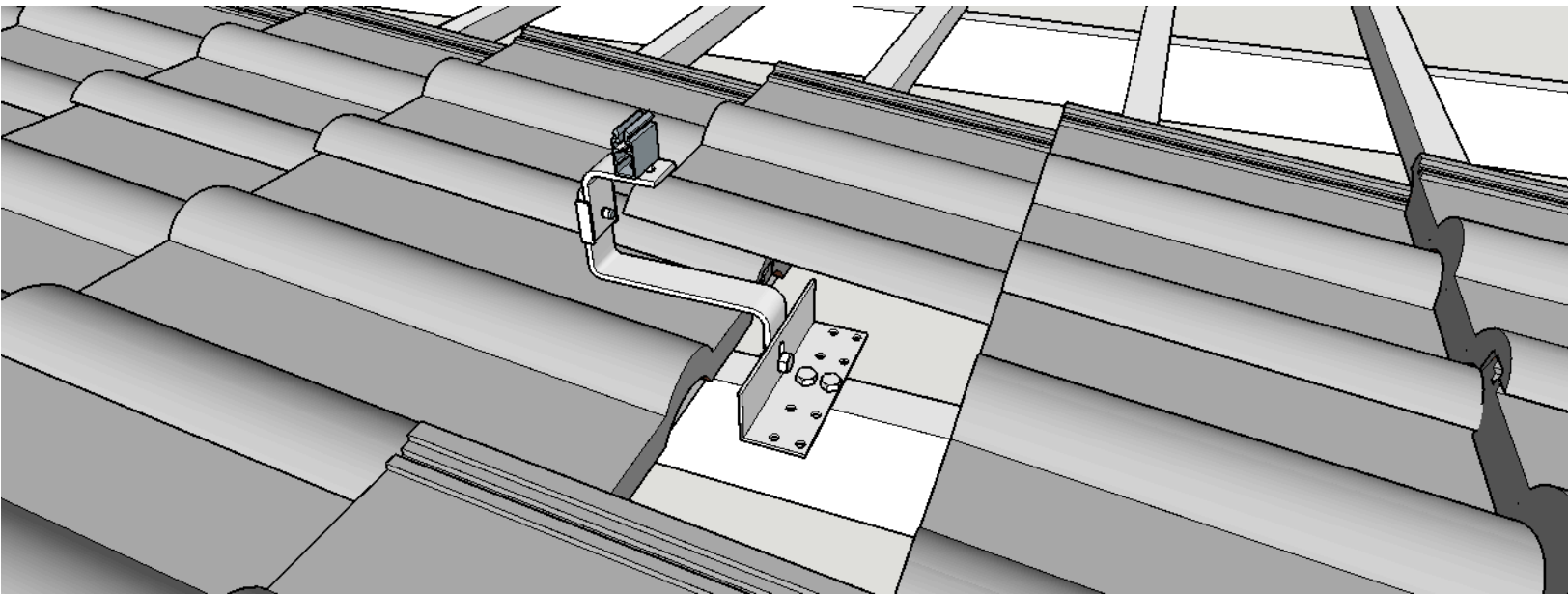


Solar panel end clamp position will vary with different size panels and manufacturers. Check solar panel data sheet for these measurements.

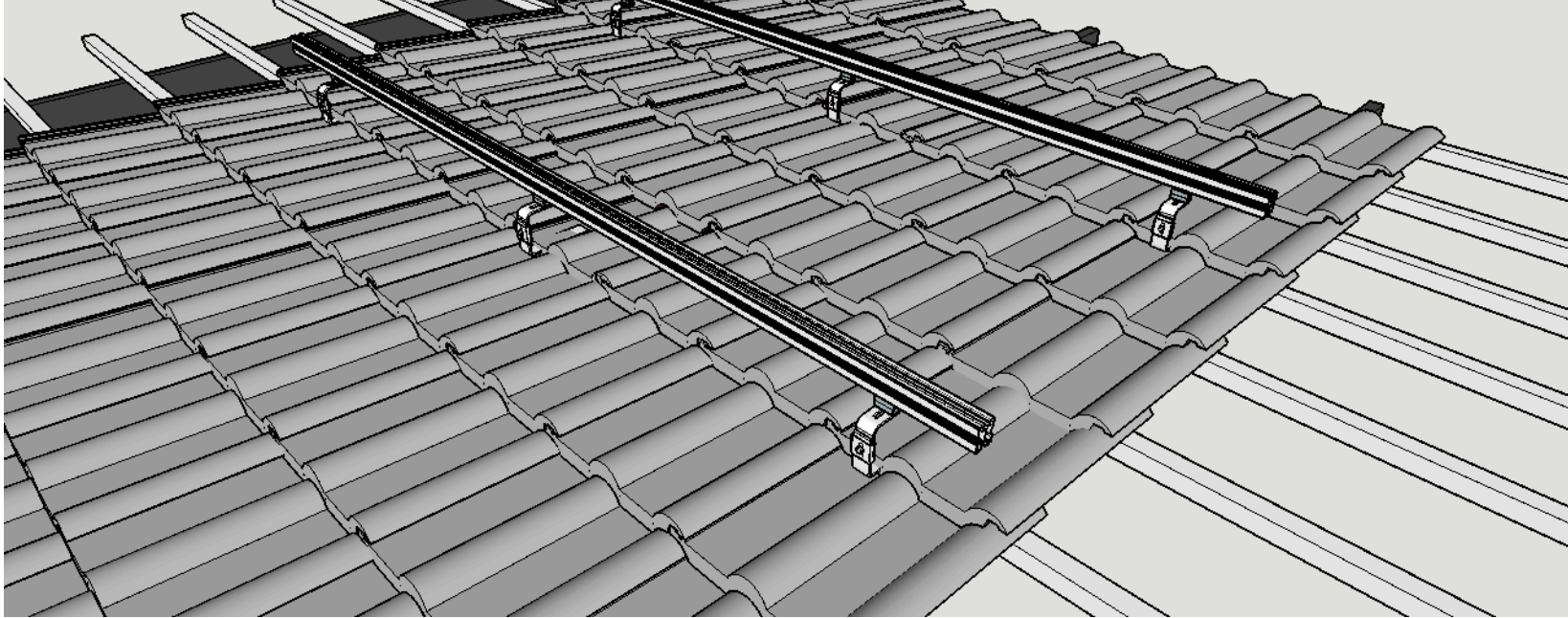
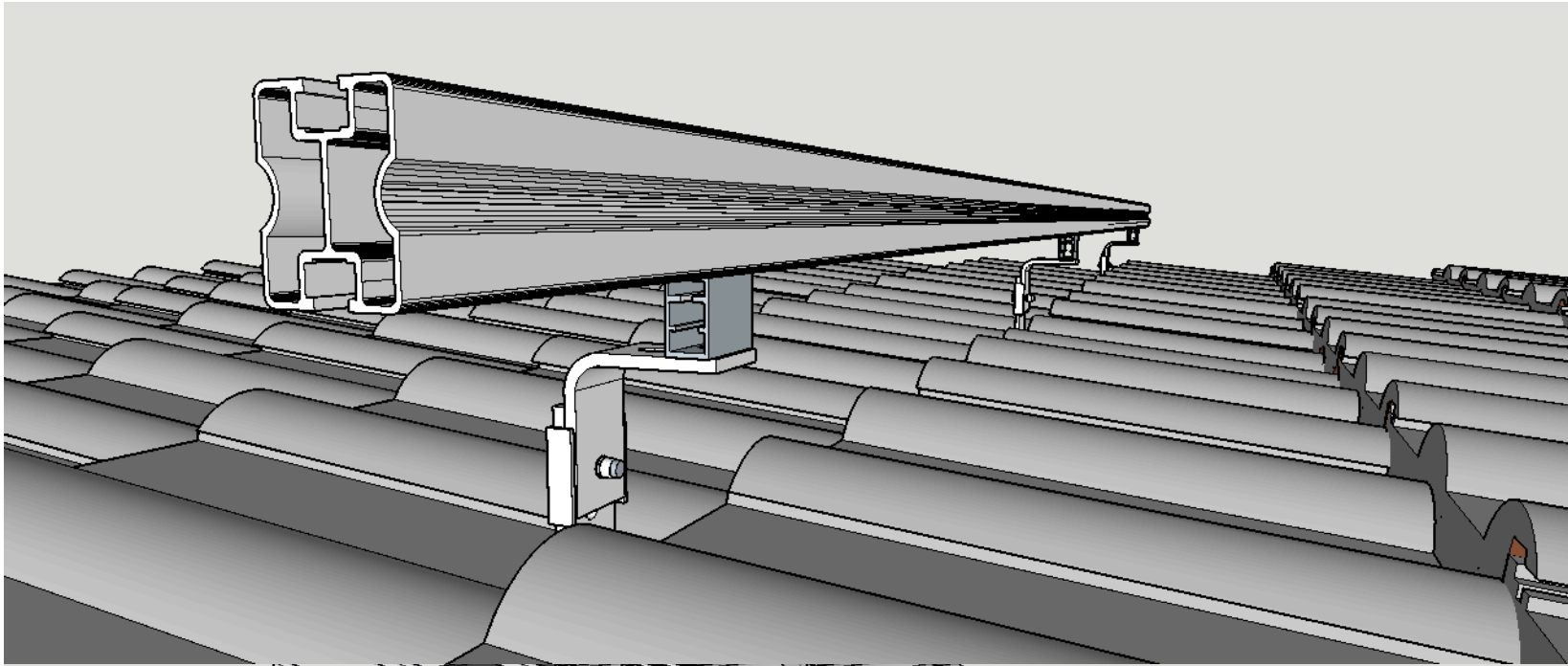


Slide up the roof tile to expose main rafter beam, locate Tile Bracket in the valley of the tile. Align mounting holes to the centre of the Rafter. Secure Tile Bracket using screws supplied.

Please take care to read and follow the installation guide instructions. Call the Help Centre, details on the packaging if you require assistance.
Disclaimer: The manufacturer and any related persons accept no responsibility for any loss or damage caused by this product or packaging to any property or persons



After bolts are fastened slide roof tile back over Tile Bracket as shown



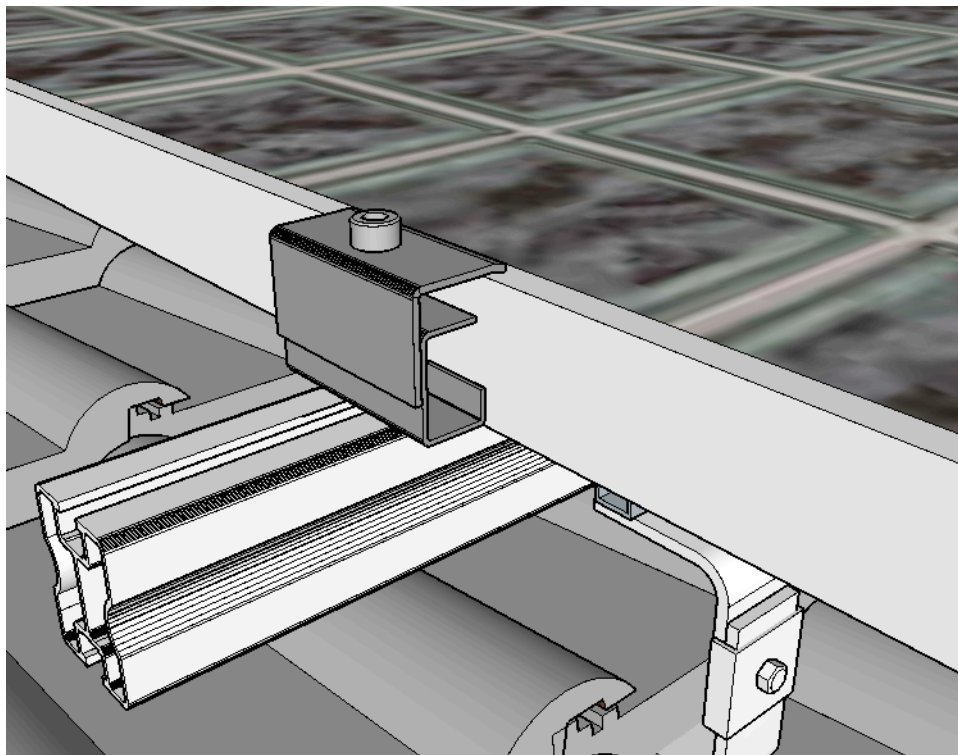
After all tiles have been moved back into position, clip the aluminium rail onto the exposed push-clip, an audible click must be heard. Ensure aluminium rails are evenly spaced over roof hooks. Tighten bolt under push-clip with 13mm spanner.

END CLAMP ASSEMBLY

Slide threaded plate into channel bracket and insert the bolt as shown.

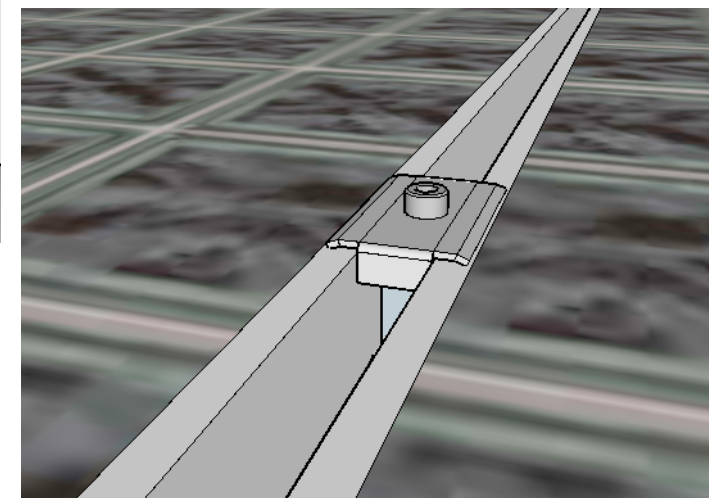
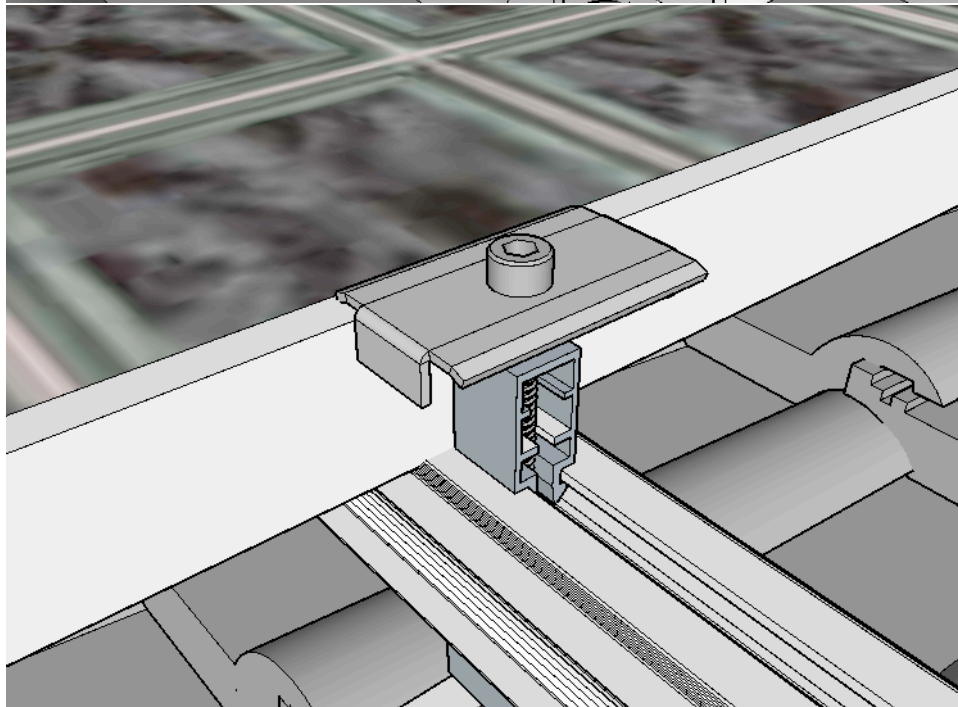
Place panel onto channel bracket and slide end clamp against solar panel frame. Make sure to lift top section of end clamp to ensure the lip rests on the solar panel frame

Tighten end clamp bolt to 20nm.



Middle clamp assembly

Clip the middle clamp into the solar rail until a click is heard. Then slide the middle clamp over the panel frame until bent lip rests on frame. As shown.



Install the second panel by sliding the solar panel under the middle clamp, repeat end clamp procedure. Now align the solar panels to be straight.

Tighten all middle and end clamps to 20 NM.