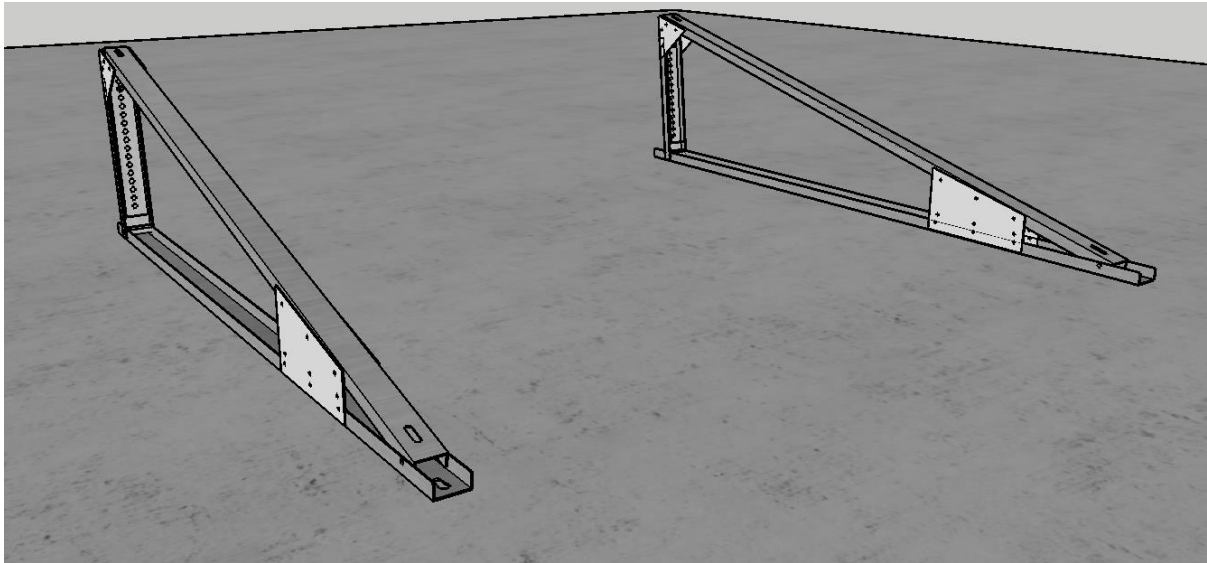
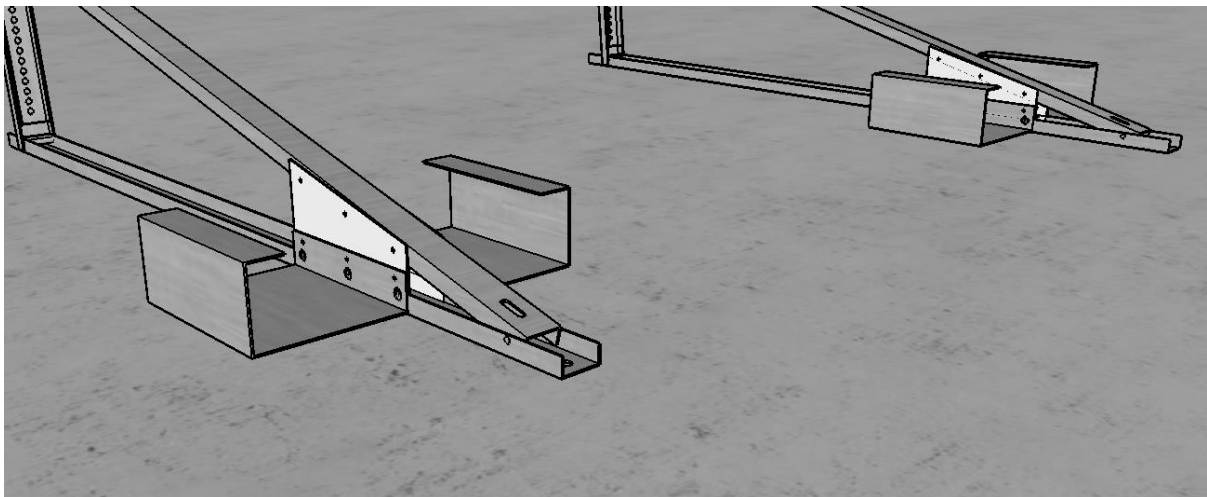

KD SOLAR INSTALLATION GUIDE – KDS HIGH WIND TIER 2 LANDSCAPE AFRAME

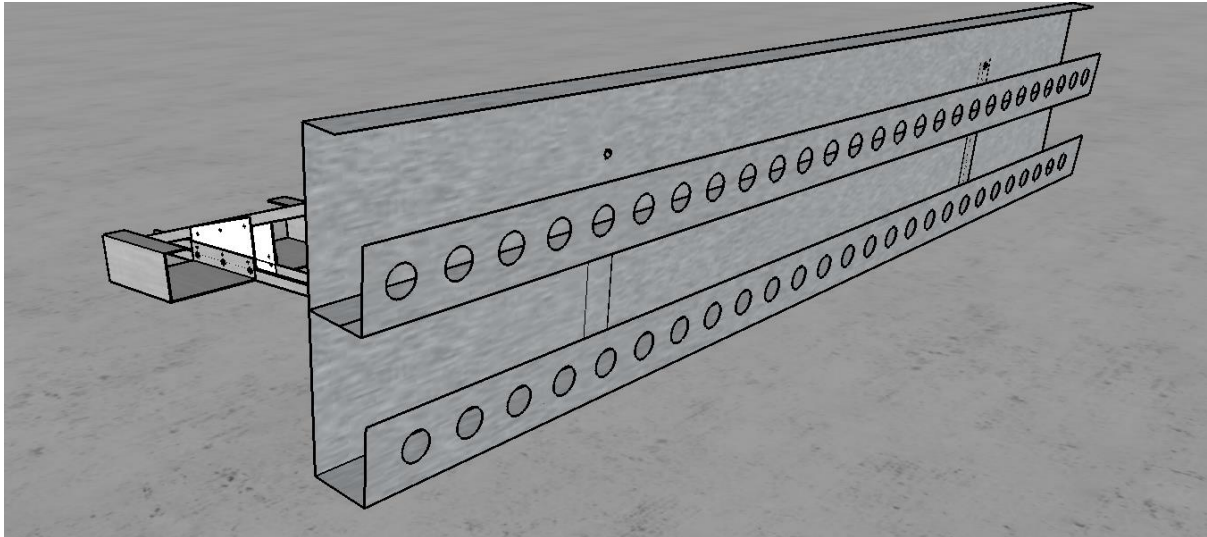




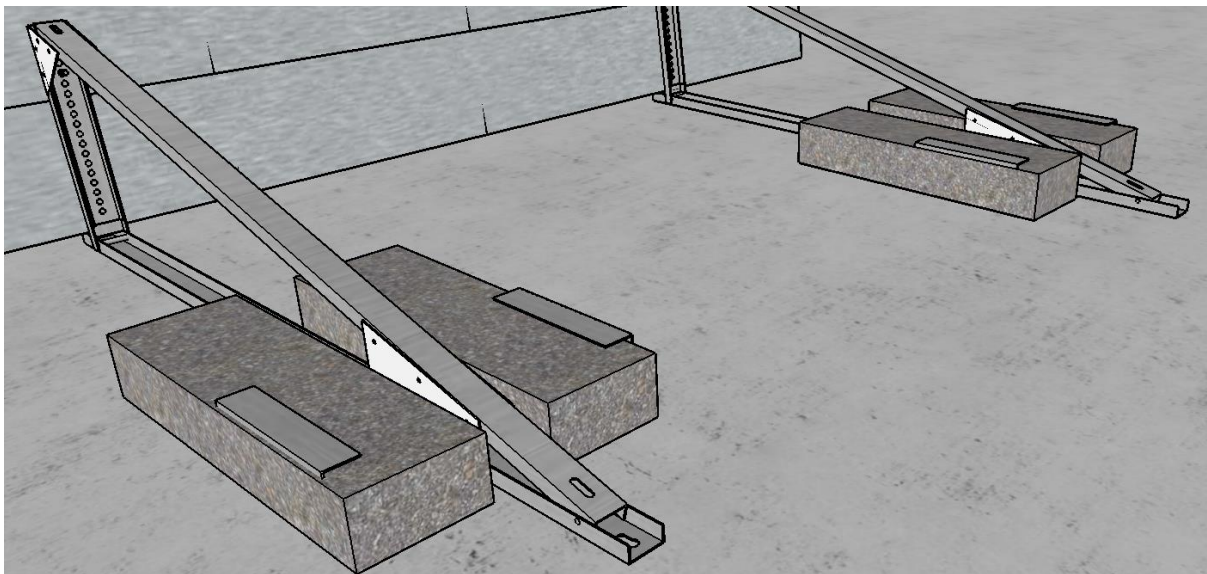
SPACE YOUR 2 A FRAMES UNDER THE CLAMPING ZONES OF THE SOLAR PANEL

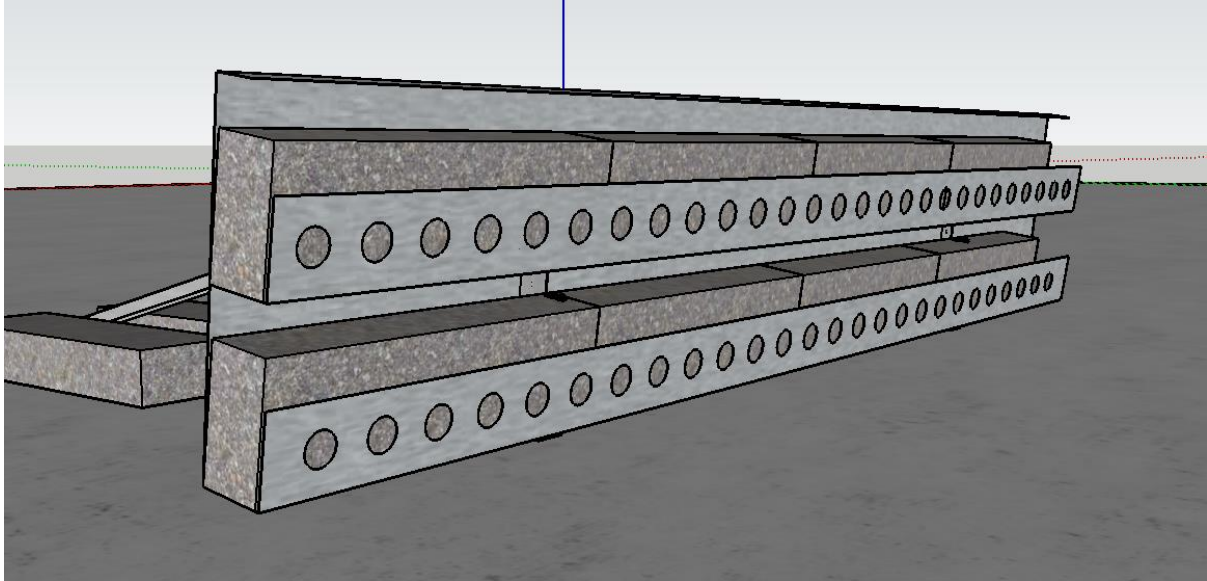


INSTALL THE FRONT BALLAST HOLDERS BY POPRIVETING THEM TO THE GUSSET ON THE FRONT OF THE A-FRAME.



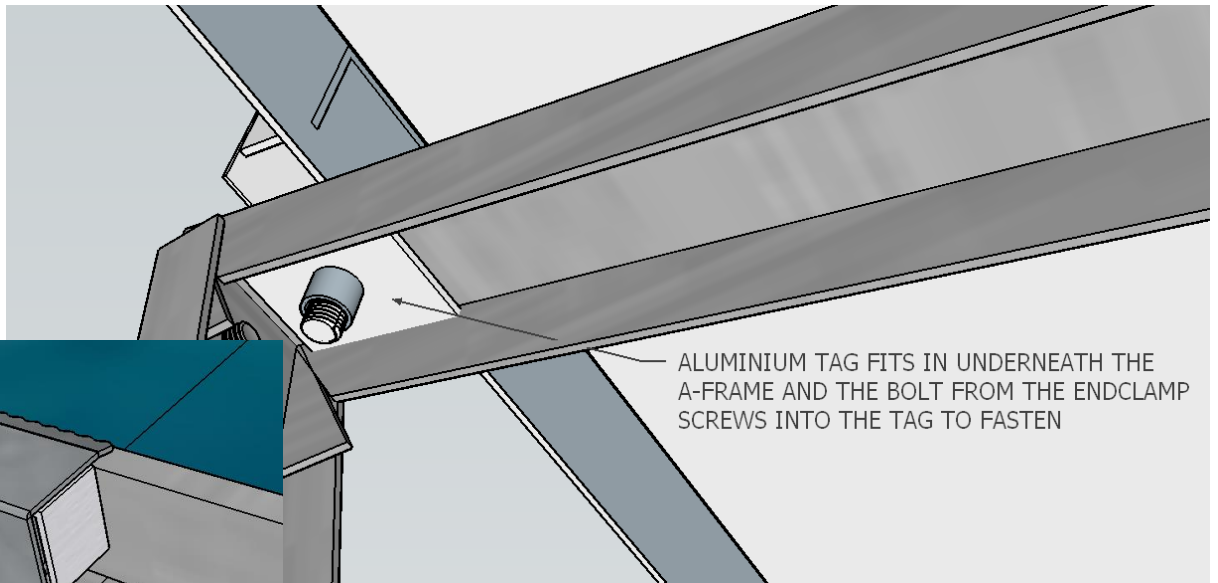
FASTEN THE REAR BALLAST HOLDERS TO THE REAR OF THE A-FRAME USING THE TEKSCREWS PROVIDED. TWO ROWS OF BALLAST HOLDERS MUST BE INSTALLED ONTO THE REAR OF THE A FRAME



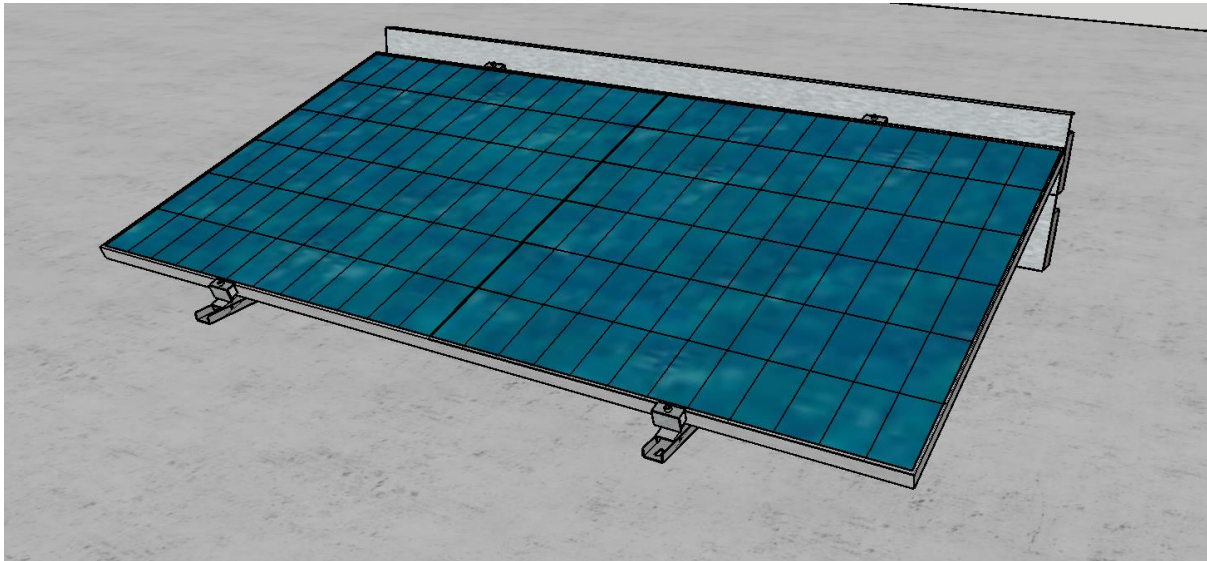


INSTALL THE BALLASTS. PLACE TWO BALLAST IN THE FRONT OF THE A FRAME, TWO PER BALLAST HOLDER.

FILL THE REAR WIND DEFLECTORS WITH BALLASTS.



INSTALL THE END CLAMP BY SLIDING THE TAG UNDER THE A-FRAMES FRAME AND FASTEN THE BOLT ONTO THE TAG FROM ABOVE. MAKE SURE THE ALUMINIUM SPACER IS PRESSED AGAINST THE PANEL WHEN FASTENING THE END CLAMP.
TIGHTEN TO 8Nm



CONTINUE USING THIS METHOD
UNTIL ALL PANELS ARE INSTALLED.

ALL END CLAMPS MUST BE
TIGHTENED TO **8Nm**