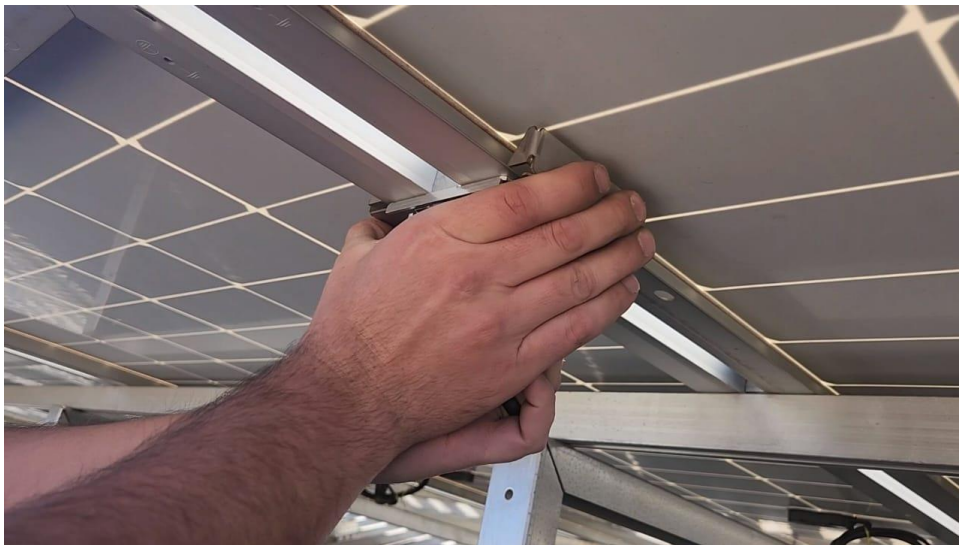

KD SOLAR INSTALLATION GUIDE – KDS-SECURI-LINK ANTI-THEFT BRACKET



INSTALLATION GUIDE



Place the Securi-link bracket underneath your panels, placing them between your panels in the 20mm gap.

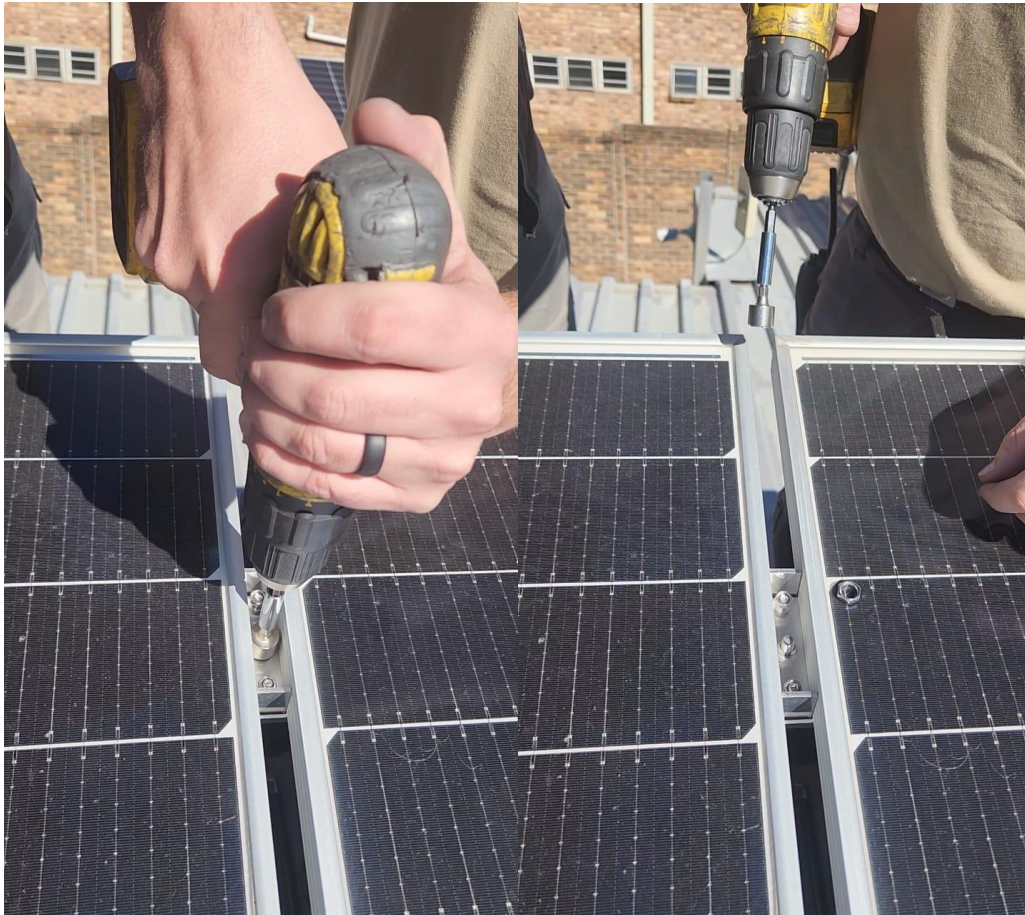


Squeeze the securi-link bracket so that the stainless-steel lip slots over the lip of the panel frame.



Gently tap the two slides on the securi-link bracket to make sure they are tight on the panel frame.

INSTALLATION GUIDE



Tighten the 3 shear nuts on the top of the securi-link bracket between the panels until the shear nuts break loose.



Your panels are now securely fastened together. This bonds the entire row together stopping the panels from being separated.

