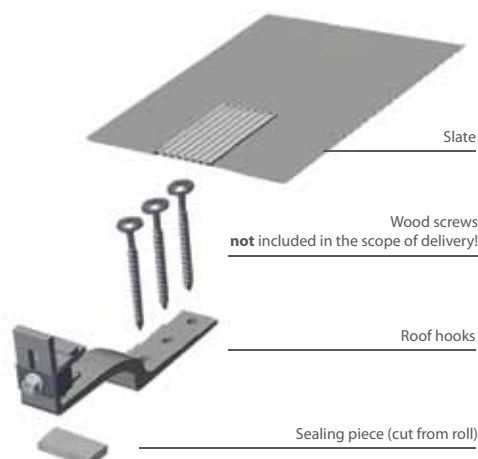


Roof hook Rapid²⁺ Slate

The fastener for shingle roofs

- Quick and easy assembly
- Suitable for many types of shingles
- Covering plate with elastic connection apron
- Direct transmission of load into the rafters



The roof hook Rapid²⁺ Slate was designed especially for the fastening on roofs with shingle covering on a batten substructure and narrow roof rafters. The cut-out that is required for the fastening of the roof hook is covered with the covering plate (Slate). The sealing piece between the roof hook and the shingle serves as a protection from water.

The fastener is available in 2 designs:

Item number 102002-001 Roof hook Rapid²⁺ Slate 75 kit
for slate overlappings up to 75 mm

Item number 102002-002 Roof hook Rapid²⁺ Slate 125 kit
for slate overlappings up to 125 mm

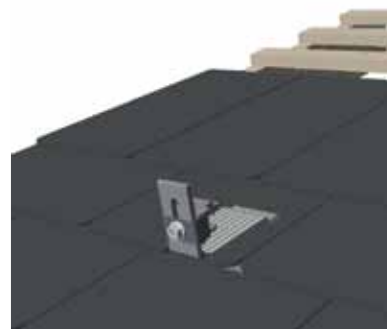
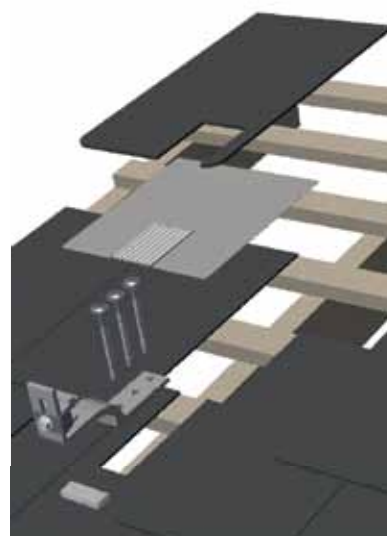
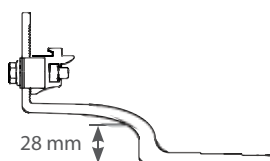
Wood screws **not** included in the scope of delivery!

3 screws with a diameter of 6 mm respectively

2 screws with a diameter of 8 mm.

Make sure that the required screwing depth is maintained!

Mounting instructions at www.schletter.eu



Technical data

Material	Roof hooks and covering plate (Slate): Aluminium Fasteners: High-grade steel 1.4301 or at least the same quality
Structural analysis	Can be calculated using a structural analysis software.

Further information at www.schletter.eu

*in accordance with our General Terms and Conditions of Sale and Supply (www.schletter.de/AGB_en)
Subject to changes and/or technical modifications.

© Schletter GmbH • Gewerbegebiet an der B15 • Alustraße 1 • 83527 Kirchdorf/Haag i. OB • Germany • Tel.: +49 8072 9191-200
Fax: +49 8072 9191-9200 • E-mail: solar@schletter.eu • www.schletter.eu • Updated 12/2013 • Subject to change without notice
Your contact in the UK: Schletter UK Limited, Tel.: +44 1296 461 800, Fax: +44 1296 461 801, E-mail: info@schletter.co.uk