

## Goodwe Firmware Updating Guide:

1. Please read instructions carefully before updating. If in doubt contact SegenSolar support for assistance.
2. **Please Note EM inverters may be damaged when updating with PV on.**
3. Please do not Use the EZ flash if the unit has the most current version on:

The firmware update for ES is EZ flash (master and slave 1515) Data send 08.  
For EM is EZ flash (master and slave 0404) Data send 08.

**The new ES inverters (shipped after march 2019) will not require EZ flash update only the Data send.**

Equipment needed:

- Laptop or PC
- USB male to male cable
- EZFlash (program)
- [Data Send \(Program\)](#)

The USB cable can be purchased at any Matrix store



*USB cable for updating*

### Download link for firmware:

<https://www.dropbox.com/sh/yuqyso46vvg1xel/AAABqqK7DWcTFFi00QnB1Oqxa?dl=0>

The dropbox download link contains all the files needed for updating the EM or ES Goodwe inverter, latest versions are regularly uploaded.

## STEP 1

Download the software and latest firmware files. It is advised to do this before traveling to site in case of any internet or computer issues.

Create a file on your desktop named Goodwe to copy the downloads to.

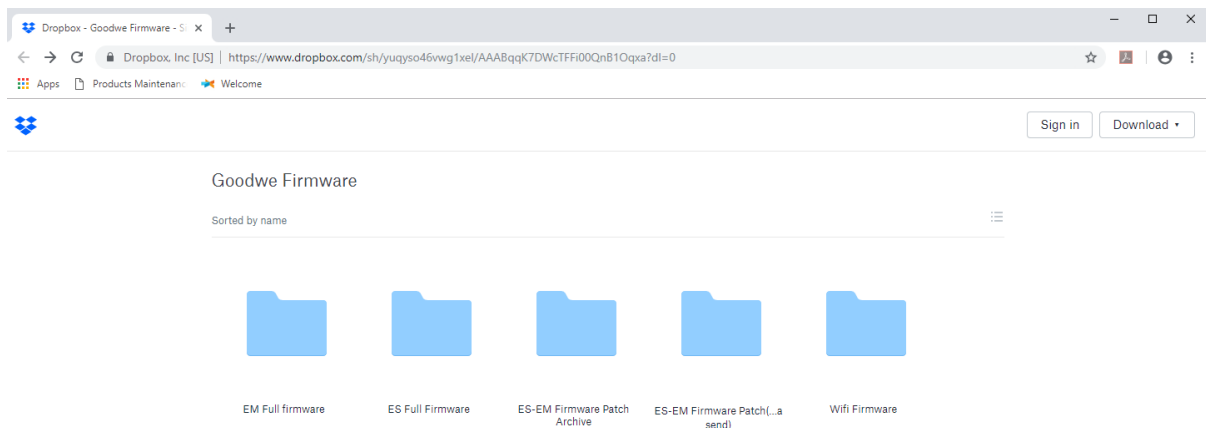
**Important:** Choose files that match your inverter model, either EM (2.3KW) or ES (4.6KW). Files are named appropriately to avoid confusion.

For the EM, chose file named “EM Full firmware” download the two files ending in “slave.out” and “master.out”.

In addition download all the files in the Ezflash folder, this is the program for updating the firmware.

For the ES, chose file named “ES Full firmware” download the two files ending in “slave.out” and “master.out”.

In addition download all the files in the Ezflash folder, this is the program for updating the firmware.



*Screen shot of Dropbox folder*

## STEP 2

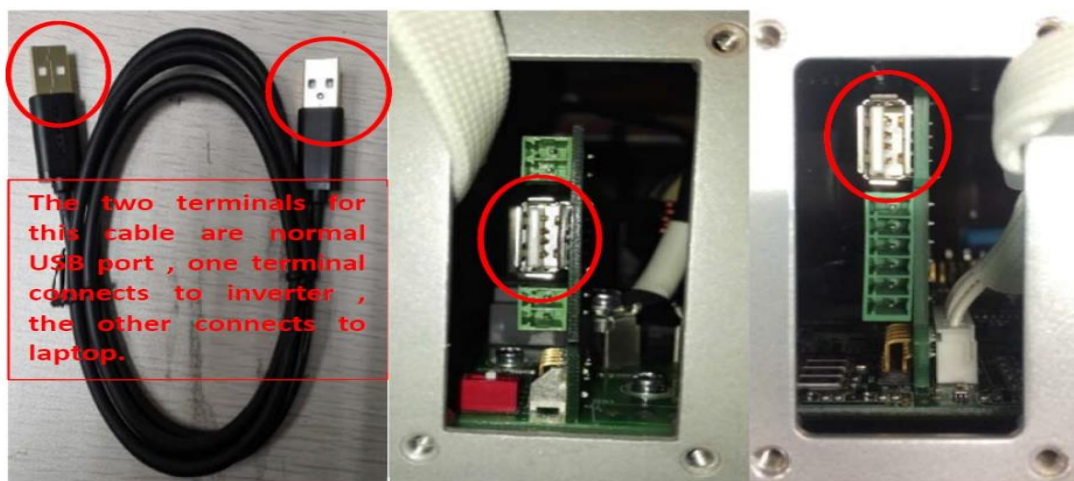
Turn off all power sources to inverter starting from grid, PV and batteries. You can power on the inverter from either the batteries or Grid. (please Note EM inverters may be damaged when updating with PV)

Remove the Wi-Fi dongle from the inverter during updates

The USB port on the ES inverter is under the panel marked "Meter". Unscrew the four screw and remove the panel.

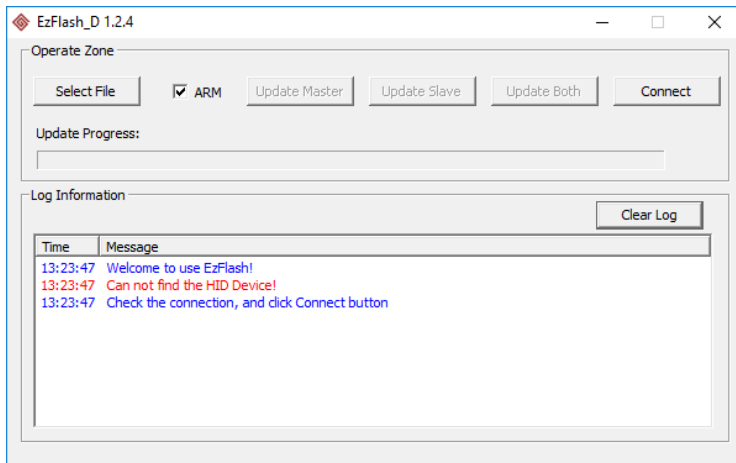
The USB port on the EM inverter is under the Wi-Fi antenna.

Connect computer and inverter with the male to male USB cable.

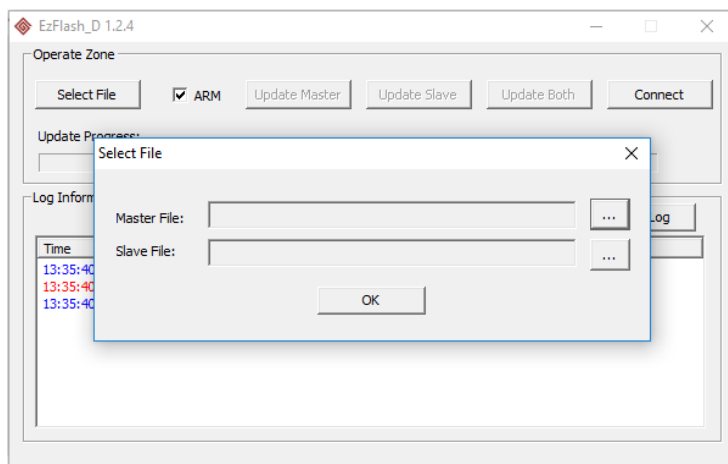


## STEP 3

Open the EzFlash program  
ARM box should be selected

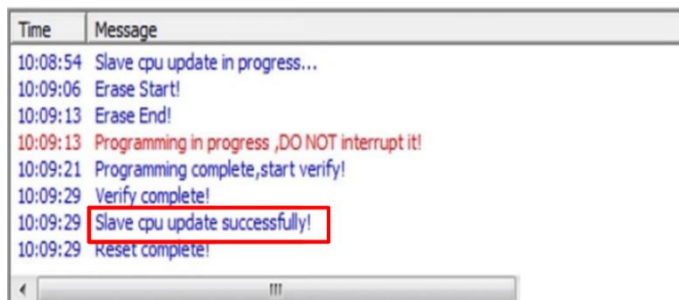


Click on select file and choose the appropriate files



Press ok. Then select the **Update Both** button.

Wait for the update to finish, it takes about 5 minutes. Until you see:



The update process should not be interrupted.

Proceed to Update the ARM patch of the inverter.

## DATA SEND

Open the DATA SEND application.

1. Please ensure USB Open Success when connected to inverter and the grid and loads are switched off. Just have one DC source on the inverter.
2. Please see attached the tool (DataSend.exe), you will need this to update the ARM firmware.

