

COMPONENT OVERVIEW 2019



General information

Materials:

Roof hooks and their main components:
Stainless steel 1.4301 or aluminum

Screws:
Stainless steel A2 or better

Sheet metal parts:
Stainless steel 1.4301 or aluminum.

Module clamps:
Aluminum

Rubber seal:
EPDM gasket (UV-resistant)

Deviating materials are described with the individual items.

Planning aid:

Configuration and structural dimensioning with the
Schletter Configurator

Structural analysis:

Static calculation according to the current country-specific standards (in Germany EN 1991, EC1). Structural analysis supplement for the dimensioning of the number of required fastening points, based on the structural analysis. Please make sure you observe the structural analysis information in each case! The verification of the adhesive force of the roof to the substructure is not included in the general structural analysis appendices!

Production-specific tolerances are to be considered with all dimension specifications.

On customer request, all companies of the Schletter Group can purchase goods from the Schletter factories in Germany, China (Shanghai) or the USA. All these three factories have been certified according to ISO 9001. Further details about the certifications are available on the respective Schletter websites.

TABLE OF CONTENTS

Component overview

Presentation

Brochures and software	06
Sample case	07

Roof hooks

Standard roof hooks	10
Rapid ²⁺ roof hooks	11
Alu-Tile	12
Roof hooks, special design	13
Roof hook accessories	15

Special fasteners

Special fasteners for roofs with wooden substructure	18
Special fasteners for roofs with steel substructure	19
Special fastener accessories	21
Sheet metal seam clamps	22
System VarioFix / SingleFix / FixZ mounting kit / EcoRapid	24
ClampFit / Fix T-K	25

Module clamps

Module clamps for framed modules	28
Clamps for laminate modules	29
Laminate clamp accessories	31

Profiles

Module support and mounting profiles	34
Profile accessories	36

Supports

Flat roof system supports	40
Special supports and facade supports	43
Support accessories	44

Load-optimized flat roof systems

FixGrid	48
FlatGrid	51

PVMax Energy-Kits

PVMax Energy-Kits	54
-------------------	----

Screws and small parts

Screws and small parts	58
------------------------	----



PRESENTATION

Brochures and Software

Sample case

BROCHURES AND SOFTWARE

Presentation

The latest brochures, product sheets, mounting instructions and further technical information as well as software can always be found in the download area of www.schletter-group.com

Upon request, we will also gladly send you our brochures in digital format.

SAMPLE CASE

Presentation



Similar illustration

Upon request!

195000-297 Sample case of roof and standard systems
Contains samples of major products in the
Schletter mounting systems



ROOF HOOKS

Standard roof hooks

Rapid²⁺ roof hooks

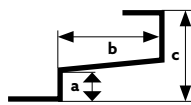
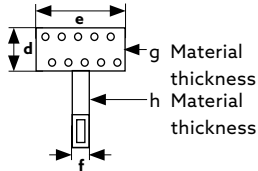
Alu-Tile

Roof hooks, special design

Roof hooks accessories

STANDARD ROOF HOOKS

Roof hooks



Dimension drawing for the tables

- All roof hooks made of stainless steel
- Adjustable hooks completely pre-assembled

Wood screws, square head bolts (M10 x 25 mm) and flange nuts must be ordered separately.

Roof hooks Eco S

- VA quality
- Welded
- Symmetric bar arrangement



100004-000 Eco S 135 roof hooks (normal height 135 mm)

	a	b	c	d	e	f	g	h	
mm	45	110	135	60	150	35	5	6	PU:20

Universal roof hooks

- VA quality
- Variable bar arrangement
- Adjustable at the front and rear
- Center bar can be used in three positions

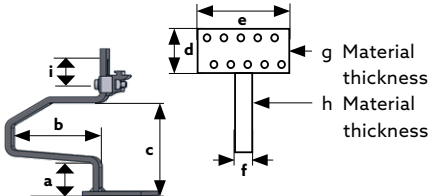


100001-000 Universal roof hooks (Frankfurt pantile or interlocking tiles)

	a	b	c	d	e	f	g	h	
mm	42-52	115	102-135	74	150	30	5	6	PU:20

RAPID²⁺ ROOF HOOKS

Roof hooks



Dimensional drawing for the tables

- VA quality
- Welded
- Symmetric bar arrangement
- Pre-assembled



101001-000 Rapid²⁺ Roof hooks 45

	a	b	c	d	e	f	g	h	i	
mm	45	110	118	60	150	35	5	6	30	PU:20

Comparable to: Eco S 100004-000



101002-000 Rapid²⁺ Roof hooks 35

	a	b	c	d	e	f	g	h	i	
mm	35	110	108	60	150	35	5	6	30	PU:20

Like 101001-000, but 35 mm / 1.38-inch fork height for low battens



101004-000 Rapid²⁺ Universal Roof hooks

	a	b	c	d	e	f	g	h	i	
mm	40-52	110	115-127	74	150	35	5	6	30	PU:10

Universally adjustable, for vertical rail mounting
Comparable to: Universal 100001-000



101005-000 Rapid²⁺ Max Roof hook

	a	b	c	d	e	f	g	h	i	
mm	45	120	125	80	180	35	6	8	30	PU:10

Like 101001-000, but bar 35 x 8 mm / 1.38 x 0.31 inches for heavy snow loads



101006-000 Rapid²⁺ MaxV Roof hooks

	a	b	c	d	e	f	g	h	i	
mm	45	120	125	80	180	35	6	8	30	PU:10

Like 101005-000, but for vertical rail mounting

ALU-TILE

Roof hooks

Replaces a complete roof tile. Please order roof hook set separately. Especially for areas with heavy snow loads.

System hooks with sheet metal replacement tiles in aluminum, EPDM screw seal, load support in plastic with A2 stainless-steel screw.

Sheet metal replacement tiles



Manufacturer	Item No.	PU:10
Braas		
Frankfurt pantile	103005-003	
Taunus pantile	103005-011	
Harz pantile	103005-022	
Tegalit	103005-025	
Topas 13V	103005-067	
Erlus		
Interlocking tile	103005-002	
Large interlocking tile	103005-007	
Large interlocking tile XXL	103005-010	
E58	103005-015	
Forma	103005-024	
Linea	103005-049	
Reform pantile XXL	103005-057	
Eternit		
Heidelberger	103005-006	
Meindl		
Rustico	103005-004	
MZ3 NEW	103005-112	

Other sheet metal replacement tiles are available on request.

Alu-Tile roof hook set

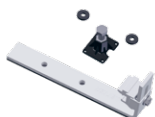
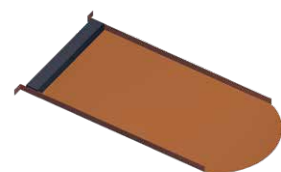
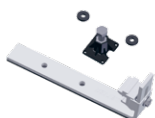
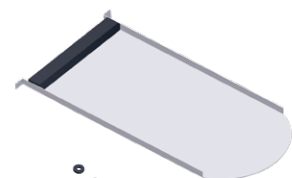
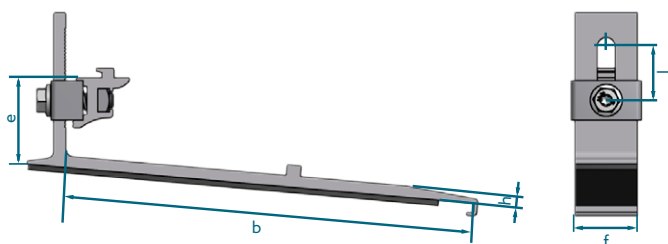
Consists of system hooks, screw seals and load support



103006-000 Alu-Tile roof hook set	PU:10
--	-------

ROOF HOOKS, SPECIAL DESIGN

Roof hooks



Sheet metal replacement tiles and roof hook sets for Rapid beaver tail incl. mounting set

109016-007 BEZ Rapid beaver tail AL 180 x 380 PU:20

109019-000 Roof hooks for Rapid beaver tail AL inst. PU:20

	a	b	c	d	e	f	g	h	i
mm	-	228	-	-	48	35	-	7	30

109016-009 BEZ Rapid beaver tail AL 170 x 380 PU:20

109019-000 Roof hooks for Rapid beaver tail AL inst. PU:20

	a	b	c	d	e	f	g	h	i
mm	-	228	-	-	48	35	-	7	30

109016-010 BEZ Rapid beaver tail AL 190 x 400 PU:20

109019-002 Roof hooks for beaver tail Rapid inst. 190 x 400 PU:20

	a	b	c	d	e	f	g	h	i
mm	-	250	-	-	50	35	-	6	30

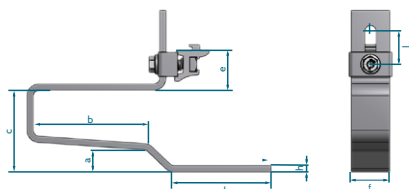
109016-008 BEZ Rapid beaver tail Cu 180 x 380 PU:20

109019-001 Roof hooks for Rapid beaver tail Cu inst. PU:20

	a	b	c	d	e	f	g	h	i
mm	-	232	-	-	50	35	-	6	30

ROOF HOOKS, SPECIAL DESIGN

Roof hooks



Rapid 2L roof hooks

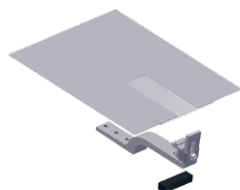
Roof hooks for system roofs made of roof insulation elements

101008-000 Rapid 2L roof hooks										PU:20
	a	b	c	d	e	f	g	h	i	
mm	20	104	74	92	36	35	-	6	30	

101008-002 Rapid 2LV roof hooks										PU:20
	a	b	c	d	e	f	g	h	i	
mm	20	100	74	92	46	35	-	6	30	

Rapid²⁺ Slate roof hooks

- Quick and easy mounting
- Suitable for many shingle types
- Roof panel with flexible corrugated strip
- Direct load on rafters



102002-002 Rapid ²⁺ Slate roof hooks, 125 set										PU:20
For slate overlaps up to 125 mm										

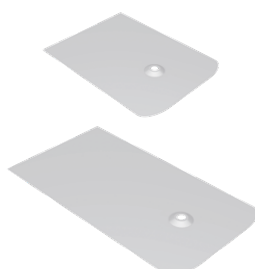
Rapid²⁺ SML

119026-101 Rapid ²⁺ SML roof hooks										PU:20
---	--	--	--	--	--	--	--	--	--	-------



SlatePlan for attachment with hanger bolts

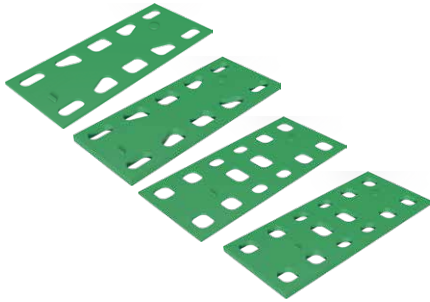
SlatePlan can be used on roofs with shingle covers, such as from bitumen, fiber cement or slate, for connection by hanger bolt systems. For accessories, see hanger bolts (page 18)



109017-000 SlatePlan with seal 270 x 200 x 0.5 mm										PU:50
109017-001 SlatePlan with seal 370 x 200 x 0.5 mm										PU:50

ROOF HOOK ACCESSORIES

Roof hooks



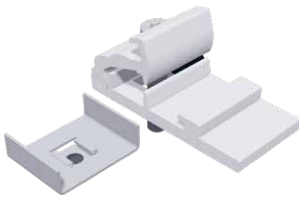
973000-017* EcoG / EcoS 2 mm shim / Rapid Standard	PU:50
973000-018* EcoG / EcoS 5 mm shim / Rapid Standard	PU:50
973000-019* Shim 2 mm VaMax / Rapid Max	PU:50
973000-020* Shim 5 mm VaMax / Rapid Max	PU:50

Spacer for roof hook mounting

* Products run out and will be replaced by 1 universal shim starting in Q2



973000-683 Roof hook sealing tape grey TP600 10 m	PU:15
--	-------



109008-003 RapFix - extension for Eco roof hooks Especially for roof hooks that are not available as a rapid version	PU:50
---	-------



925120-002 Spacer sleeve, plastic, 1 m - For rafter insulation - Usable as a spacer sleeve for rafter insulation in connection with extra-long fastening screws - Plastic version prevents cold bridges - Cut to desired length - Order screws separately! - Observe reduced load for roof hooks!	
---	--



109010-000 Additional bracket Iso07 For roof hook fastening, system Iso07	PU:20
---	-------



SPECIAL FASTENERS

Special fasteners for roofs with wooden substructure

Special fasteners for roofs with steel substructure

Special fastener accessories

Sheet metal seam clamps

System VarioFix / SingleFix / FixZ mounting kit / EcoRapid

ClampFit / Fix T-K

SPECIAL FASTENERS FOR ROOFS WITH WOODEN SUBSTRUCTURE

Roof cladding: Corrugated roofs & trapezoidal sheet

For corrugated sheets (such as those of fiber cement) or trapezoidal sheet roofs, corrugated roof fastening sets consisting of a special hanger bolt with EPDM seal and a mounting plate are used. Please note that illustrations and thread lengths may vary!



Hanger bolt

110010-200 Hanger bolt set 10 x 200 mounted	PU:50
110012-200 Hanger bolt set 12 x 200 mounted	PU:50
110012-300 Hanger bolt set 12 x 300 mounted	PU:50

Hanger bolt set pre-assembled with vulcanized EPDM seal (UV resistant) and 3 flange nuts in V4A, mounted

+ adapter

= ready to use
Fastening systems



119002-000 Mounting plate for hanger bolt M10 / M12	PU:50
For hanger bolts M10 / M12, loose, aluminum 120 x 60 x 6 mm	



119001-000 KlickTop extension part for hanger bolt	PU:50
For M10 / M12 hanger bolts, loose, aluminum	



119033-004 Universal adapter Duo M10 / M12	PU:50
For M10 / M12 hanger bolts, loose, aluminum	



119033-001 Universal adapter Uno M10 / M12	PU:50
For M10 / M12 hanger bolts, loose, aluminum	

Rapid cross connectors (item 129063-000) must be ordered separately

SPECIAL FASTENERS FOR ROOFS WITH STEEL SUBSTRUCTURE

Roof cladding: Corrugated roofs & trapezoidal sheet



Threaded screw, self-grooving, VA

943718-064 8 x 64	PU:100
943718-100 8 x 100	PU:100
943718-125 8 x 125	PU:100
943718-150 8 x 150	PU:100
943718-200 8 x 200	PU:50

+ adapter

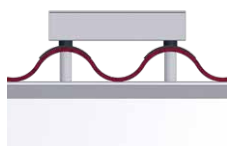
= ready to use
Fastening systems



119033-002 Uno M8 universal adapter	PU:50
119005-000 Seal cap for corrugated sheets 5 / 6 / 8	PU:50
119004-002 Spacer sleeve AL 65 x 20*	PU:50
119004-003 Spacer sleeve AL 1000 x 20**	PU:30

* for profile height 57 mm

** for other profile heights, these must be cut to size at the construction site
Rapid cross connectors (item 129063-000) must be ordered separately

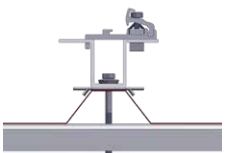


119033-005 Duo M8 universal adapter	PU:50
119005-000 Seal cap for corrugated sheets 5 / 6 / 8	PU:50
119004-002 Spacer sleeve AL 65 x 20*	PU:50
119004-003 Spacer sleeve AL 1000 x 20**	PU:30

For each mounting point, 2 threaded screws must be calculated

* for profile height 57 mm

** For other profile heights, these must be cut to size at the construction site



119033-002 Uno M8 universal adapter	PU:50
119005-001 Universal sphere cap with EPDM	PU:50

Rapid cross connectors (item 129063-000) must be ordered separately

SPECIAL FASTENERS FOR ROOFS WITH STEEL SUBSTRUCTURE

Roof cladding: Corrugated roofs & trapezoidal sheet

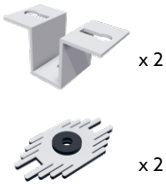


Threaded screw, self-grooving, VA

943718-064	8 x 64	PU:100
943718-100	8 x 100	PU:100
943718-125	8 x 125	PU:100
943718-150	8 x 150	PU:100
943718-200	8 x 200	PU: 50

+ adapter

= ready to use
Fastening systems



x 2



x 2

119033-002	Uno M8 universal adapter	PU:50
119005-001	Universal sphere cap with EPDM	PU:50

For each mounting point, 2 threaded screws must be calculated

Additionally, the upper profile and the necessary mounting screws must be considered

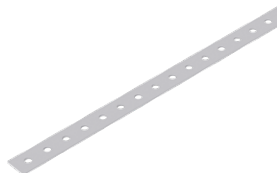
SPECIAL FASTENER ACCESSORIES



FixPlan - in connection with hanger bolts

The alternative for level sheet metal roofs for which fastening on the fold is not possible (e.g. titanium zinc sheet roofs)

114003-000 FixPlan sealing plate	PU:100
114004-000 Bituplan additional seal for FixPlan For mounting with bitumen coverings	PU:100



Accessory system for VarioFix / SingleFix / FixZ mounting kit

119015-002 Punched mounting tape 6-50 m For connection of individual clamps as potential connection or for fastening the string cabling if no mounting rails are used

SHEET METAL SEAM CLAMPS

Special fasteners

Please note: The tightening torque must be limited so that the sheet metal seam does not become distorted and the thermal lengthening of the sheets is not prevented!

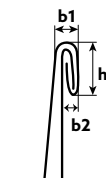


112001-000 Seam clamp 503 VA for standing seam roof	PU:50
Please note: For titanium zinc sheets, it must be checked whether the fold can be stressed!	

112001-005 Folding clamp 503 Rapid for standing seam roof	PU:50
--	-------



112001-010 Seam clamp 504 AL KK for standing seam roof	PU:50
Especially suitable for double standing seam roofs made of titanium zinc sheet	



Possible dimensions of the border fold (left dimension drawing)
 $h = 11-13 \text{ mm}$, $b1 = 4-6 \text{ mm}$, $b2 = \text{max. } 3 \text{ mm}$

The 504 seam clamp was developed together with the Rheinzink company for use on double standing seam roofs made of titanium zinc sheet and approved by Rheinzink. The profiles mounted on the standing seam clamps must not exceed a length of about 3 m without thermal separation.



112002-003 Seam clamp 510 AL Rapid for KalZip and similar	PU:50
--	-------



112003-003 Seam clamp 520 Rapid Zambelli RibRoof465 and similar	PU:50
--	-------

SHEET METAL SEAM CLAMPS

Special fasteners



112004-002 Folding clamp 522 AL Rapid Zambelli RibRoof500 and similar PU:50



112006-002 Seam clamp 524 Rapid Fischer KlipTec and similar PU:50



112007-000 Seam clamp 525 VA for Domico Domitec for Domico and similar PU:50



112012-002 Seam clamp 540 AL KK for KlipLok 700 / 406 for KlipLok 700 HiStrength, Classic 700 / 406 and similar PU:50

SYSTEM VARIOFIX / SINGLEFIX / FIXZ MOUNTING KIT / ECORAPID

Special fasteners

The universal trapezoidal sheet fastener for steel and aluminum sheet from 0.5 mm. Pay special attention to the usage notes!



113014-000 EcoRapid - clamp directly on frame for corrugation heights from 22 mm Screws must be ordered separately as needed Item number: 943000-360 EcoRapid on edge of module field: 2 screws EcoRapid in center of module field: 1 screw	PU:200
---	--------

SingleFix-V Solo



113009-103 SingleFix-V Solo 20-pair set for corrugation heights from 22 mm (2 x SingleFix-V Solo, 4 sheet metal screws) Used in connection with Solo mounting rails, for example	PU:50
--	-------

+ Profile

= Mounting kit



120011-00450 EcoLight 450 mm module support profile	PU:50
--	-------



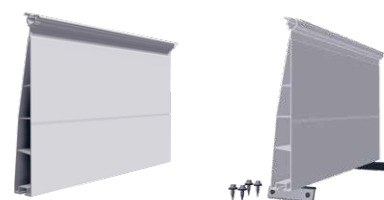
121010-202 FixZ-7 system profile18 lower 450 mm	PU:25
--	-------



121001-202 FixZ-7 upper system profile18 450 mm	PU:25
--	-------



121009-202 FixZ-15 system profile18 lower 450 mm	PU:25
---	-------



121008-202 FixZ-15 upper system profile18 450 mm	PU:25
---	-------

CLAMPFIT

Special fasteners

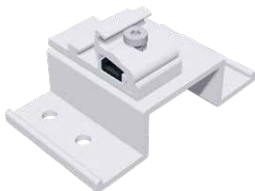


The cost-optimized trapezoidal sheet fastener system for steel and aluminum sheet from 0.5 mm. Pay special attention to the usage notes!

130004-100 ClampFit fastener	PU:100
Module clamps additionally needed depending on the frame height	

FIX T-K

Special fasteners



The innovative fastener for bitumen roofs on wood casings

119014-012 Fix T-K	PU:50
---------------------------	-------



MODULE CLAMPS

Module clamps for framed modules

Clamps for laminate modules

Laminate clamp accessories

MODULE CLAMPS FOR FRAMED MODULES

Module clamps

Rapid16 AL module clamp system

The Rapid16 module clamp is a further development of the proven Rapid2+ module clamp used by the million. Due to its variable use, the item quantity has been drastically reduced without losing utility. All module clamps come with a grounding pin as standard equipment.



AL blank	Black anodized item designation	Installation type
131121-002	131121-902 Rapid16 center clamp 40-50	V + H PU:100



131101-002	131101-902 End clamp Rapid16 40-50	V + H PU:50
-------------------	---	--------------------



131121-001	131121-901 Rapid16 center clamp 30-40	V + H PU:100
-------------------	--	---------------------



131101-001	131101-901 Rapid16 end clamp 30-40	V PU:50
-------------------	---	----------------



131101-003	131101-903 Rapid16 end clamp 30-40	H PU:50
-------------------	---	----------------

CLAMPS FOR LAMINATE MODULES

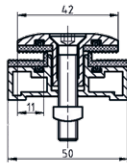
Module clamps

Profi and Eco laminate series

For various module thicknesses
 Attention: Observe the tightening torque!
 (see also: General information on laminate mounting)

Profi laminate series

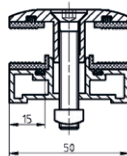
for laminate thicknesses 3-14 mm
 Glass inset: Profi narrow 11 mm, Profi wide 15 mm
 Length: 80 mm, clearance between modules: approx. 20 mm
 Incl. countersunk screw and square nut



132201-308 Profi center clamp narrow 3-8 mm set	PU:200
132201-914 Profi center clamp narrow 9-14 mm set	PU:200



132101-308 Profi end clamp narrow 3-8 mm set	PU:200
132101-914 Profi end clamp narrow 9-14 mm set	PU:200



132202-308 Profi center clamp wide 3-8 mm set	PU:200
132202-914 Profi center clamp wide 9-14 mm set	PU:200



132102-308 Profi end clamp wide 3-8 mm set	PU:200
132102-914 Profi end clamp wide 9-14 mm set	PU:200

CLAMPS FOR LAMINATE MODULES

Module clamps



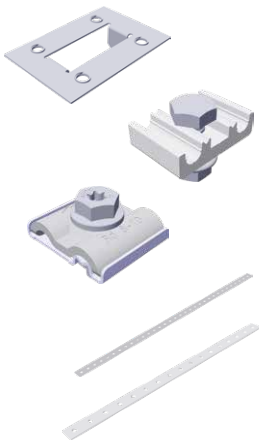
Eco laminate series

Length of aluminum clamp: 70 mm, glass inset: 11 mm, clearance between modules. 22 mm, (no compression of the laminate)

133264-168 Eco6-S4 center clamp laminate 6.8 mm set	PU:100
133164-168 Eco6-S4 end clamp laminate 6.8 mm set	PU:100

With M8 x 20 accessories, without click-in component
With aluminum clamp surrounding EPDM rubber

Certified clamps for First Solar series 4 modules made of highly insulated EPDM rubber material. The certification can be found in the download area at www.schletter-group.com



Lightning protection and potential equalization

135004-000 Ground plate for module grounding, not for laminate clamps!	PU:100
135003-000 Lightning protection clamp for 8 mm AL completely pre-assembled (for DM 8 mm wiring)	PU:20
135003-002 Grounding and lightning protection clamp VA M8 Clamping range Rd 8-10 mm Connection single / multi-wire 4-50 mm ²	PU:20
119015-002 Punched mounting tape 6-50 m	
119015-003 Punched mounting tape 16-50 m lightning resistant	

LAMINATE CLAMP ACCESSORIES

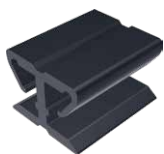
Module clamps



AL blank

139004-000 Bearing plate for Eco module clamp
For raising the bearing surface

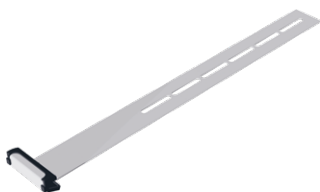
PU:200



973000-012 Spacer

For laminate thicknesses 4-10 mm

PU:100



AL blank

139008-006 Safety hooks, laminate 3-8 mm

PU:100



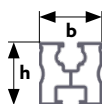
PROFILES

Module support and mounting profiles

Profile accessories

MODULE SUPPORT AND MOUNTING PROFILES

Profiles



The series for the proven click system with the right accessories
 Mounting with square nut, click system and Rapid2+
 - Structural analysis tables for cross beams
 - Load determination software on the Internet:
www.schletter-group.com
 (Download > Solar mounting systems > Software & calculation)



Module support profile EcoLight

Mechanical connection

Upper: KlickNut M8
 Lower: Screw channel M10

b	h
30 mm	30 mm

AL blank

120011-04200	4.2 m
120011-06200	6.2 m



Module support profile Eco05

Mechanical connection

Upper: KlickNut M8
 Lower: Screw channel M10

b	h
30 mm	30 mm

AL blank

120001-04200	4.2 m
120001-006	6.0 m
120001-06200	6.2 m

For small spans

MODULE SUPPORT AND MOUNTING PROFILES

Profiles



Module support profile Solo

Mechanical connection

Upper: KlickNut M8
Lower: Screw channel M10

b	h
40 mm	40 mm

AL blank Black anodized

120005-04200	120005-94200	4.2 m
120005-006	120005-906	6.0 m
120005-06200		6.2 m



Module support profile SoloPlus

Mechanical connection

Upper: KlickNut M8
Lower: Screw channel M10

b	h
40 mm	60 mm

AL blank

120006-04200		4.2 m
120006-006		6.0 m
120006-06200		6.2 m



Solo XL module support profile

Mechanical connection*

Upper: KlickNut M8
Lower: Screw channel M10

b	h
40 mm	120 mm

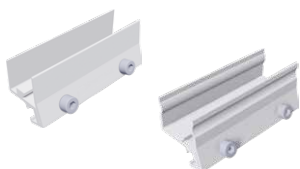
AL blank

120015-06200		6.2 m
---------------------	--	-------

* The lower M10 screw channel is only suitable for connecting with square head bolt 943410-025. Not for Rapid cross connector, KlickTop or similar connections.

PROFILE ACCESSORIES

Profiles



129001-003	E Eco connector, pre-assembled	PU:100
-------------------	--------------------------------	--------

129002-002	E Solo, SoloPlus connector FixZ-7, FixZ-15, pre-assembled	PU:100
-------------------	---	--------



129001-004	Eco internal connector set	PU:50
-------------------	----------------------------	-------

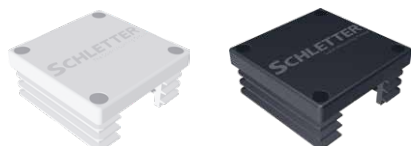


129060-001	Solo slide-in connector set	PU:50
-------------------	-----------------------------	-------

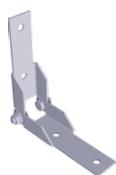


AL blank	Black anodized	
----------	----------------	--

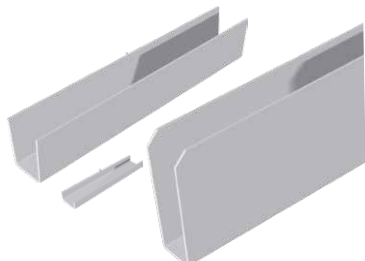
129063-000	129063-900	Rapid cross connector Completely pre-assembled for Klicknut M8 for cross rail system See Rapid cross connector product sheet	PU:200
-------------------	-------------------	---	--------



Grey	Black		
129011-000	129011-900	Solo plastic end cap	PU:100



129061-001	Ridge connector set	PU:50
-------------------	---------------------	-------



129001-007	SoloPlus internal connector	PU:25
-------------------	-----------------------------	-------

129001-008	EcoLight internal connector	PU:25
-------------------	-----------------------------	-------

129001-009	SoloXL internal connector set	PU:25
-------------------	-------------------------------	-------



119033-002	Uno M8 universal adapter	PU:50
-------------------	--------------------------	-------

As clamp dowel for special applications in connection with the Eco05 module support profile the profile must be fastened with M8 screws to the clamp dowel



SUPPORTS

Flat roof system supports

Special supports and facade supports

Support accessories

FLAT ROOF SYSTEM SUPPORTS

Supports

For all types of flat roof fasteners, depending on the substrate and fastener, diagonal reinforcement of the support lattice is a good idea.

If necessary, these reinforcements can be built on site, e.g., using our punched mounting tape 16-50 m 119015-003.

Other angles 15°–60° in 5° increments possible.

Mounting beams

Floor profile

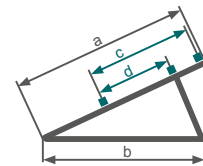


Series 07

Flex Console

Light U

Profi U



Support, 30° angle other angles 15°–60° in 5° increments possible



Flat roof support Light U (30 degree, AL, screwed)

Series 07	Module height	a	b	c	d
150001-130	approx. 1300 mm	1195 mm	1193 mm	850 mm	600 mm
150001-150	approx. 1500 mm	1445 mm	1193 mm	960 mm	690 mm



Flat roof support Light U (30 degree, AL, screwed)

Flex Console	Module height	a	b	c	d
150101-130	approx. 1300 mm	1195 mm	1193 mm	-	-
150101-150	approx. 1500 mm	1445 mm	1193 mm	-	-

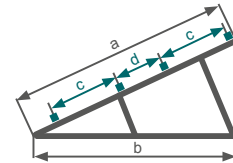


Flat roof support Profi U (30 degree, AL, screwed)

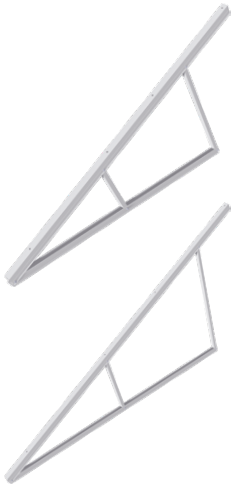
Series 07	Module height	a	b	c	d
151001-150	approx. 1500 mm	1445 mm	1193 mm	960 mm	690 mm

FLAT ROOF SYSTEM SUPPORTS

Supports



Support, 30° angle other angles 15°-30° in 5° increments possible



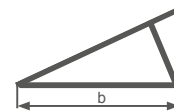
Flat roof support Profi U (30 degree, AL, screwed)

Series 07	Module height	a	b	c	d
151001-220	approx. 2200 mm	2200 mm	2216 mm	747 mm	461 mm



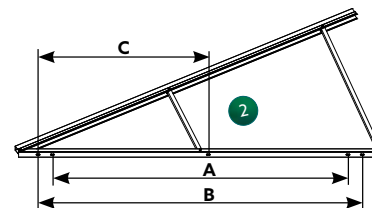
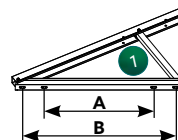
Flat roof support XL (30 degree, AL, screwed)

Series 07	Module height	a	b	c	d
155001-320	approx. 3200 mm	3195 mm	2635 mm	1072 / 1080 mm	733 mm



Hole distances in mm

Module height approx.	1300	1500	1800	2200	3200
Floor profile (b)	995			2216	2795
Dimensional drawing	1	1		1	2
A	743	743		1756	2185
B	963	963		1961	2405
C					1202.5



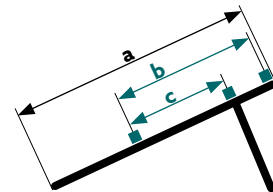
The slots in the floor profile allow an mounting tolerance of + / -8 mm

FLAT ROOF SYSTEM SUPPORTS

Supports

Upper support parts for use with systems or continuous beams

When putting systems together, the fitting sets must be considered when ordering.



Support, 30° angle other angles 15°-60° in 5° increments possible



Flat roof support upper part Light

Series 07	Module height	a	b	c
150003-001	approx. 1300 mm	1195 mm	850 mm	600 mm
150003-002	approx. 1500 mm	1445 mm	960 mm	690 mm



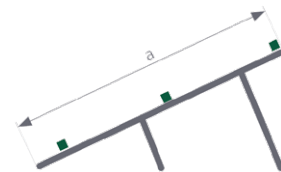
Flat roof support upper part Light

Flex Console	Module height	a	b	c
150103-001	approx. 1300 mm	1195 mm	-	-



Flat roof support upper part Profi

Series 07	Module height	a	b	c
151003-000	approx. 1500 mm	1445 mm	960 mm	690 mm



Support, 30° angle other angles 15°-30° in 5° increments possible



Flat roof support upper part

Flex Console	Module height	a	b	c
151103-001	approx. 2200 mm	2200 mm	-	-

SPECIAL SUPPORTS AND FACADE SUPPORTS

Supports

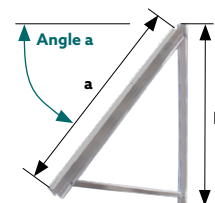
Special supports



Green roof support for modules up to 1.6 m
Angle of 15°-30° in 5° increments possible

Please give the desired inclination!
AL, screwed, approx. 0.4 m ground clearance
Length of mounting beam: approx. 1.3 m

152001-000 Green roof systems for modules up to 1.6 m



Facade supports for modules 1.3-1.6 m
Angles of 30°-75° in 5° increments possible

For choosing the support angle, please indicate the module inclination to the horizontal

Facade supports		Module height	a	b
156001-160	Facade support for modules 1.3-1.6m	approx. 1.3-1.6 m	1285 mm	1323 mm

SUPPORT ACCESSORIES

Supports



Filling finish

159000-027 Concrete block filling finish set18	PU:100
---	--------

160002-001 SolRack AL (1 plate) Material thickness: 1 mm Surface: 0.55 m ²	
--	--

SolRack accessories

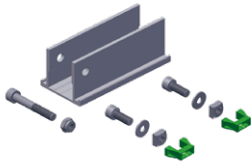
(2 units per plate required!)

943610-025 Screw M10 x 25 hexagonal DIN933 A2 GMB	PU:100
943922-010 Large washer M10 DIN9021 A2	PU:100
943912-010 Flange nut M10 with locking teeth DIN6923 A4	PU:100

SUPPORT ACCESSORIES

Supports

When putting systems together, the fitting sets must be considered when ordering. The mounting material is provided for M8 click channels.



159000-002 Fitting set 07 for CompactVario, simple	PU:100
For assembly of upper support parts on profiles, such as profile family 05	

Windsafe (depending on project)

Rear wall paneling for elevated PV systems to reduce wind loads



164160-180 Windsafe Vario AL 160 x 1830 mm
164250-180 Windsafe Vario Alu 250 x 1830 mm
164500-180 Windsafe Vario Alu 500 x 1830 mm



LOAD-OPTIMIZED FLAT ROOF SYSTEMS

FixGrid

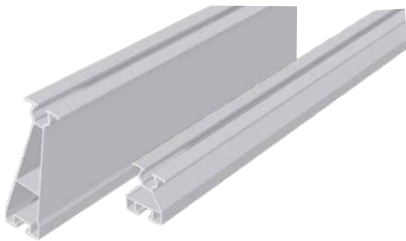
FlatGrid

FIXGRID

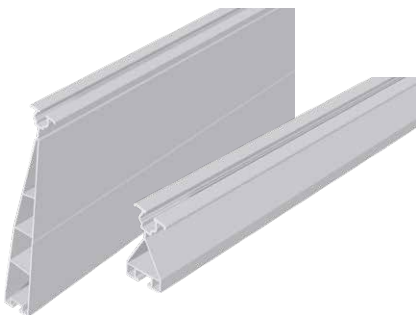
Load-optimized flat roof systems



FixGrid18	
163000-201	FixGrid18 100 kit 6° set of 2
163000-202	FixGrid18 100 kit 6° set of 3
163000-203	FixGrid18 100 Kit 13° set of 2
163000-204	FixGrid18 100 kit 13° set of 3
163000-301	FixGrid18 South kit 6° set of 2
163000-302	FixGrid18 South kit 6° set of 3
163000-303	FixGrid18 South kit 13° set of 2
163000-304	FixGrid18 South kit 13° set of 3



FixZ-7	
121001-04200	FixZ-7 Upper system profile 4200 mm
121001-06200	FixZ-7 Upper system profile 6200 mm
121010-04200	FixZ-7 Lower system profile18 4200 mm
121010-06200	FixZ-7 Lower system profile18 6200 mm



FixZ-15	
121008-04200	FixZ-15 Upper system profile18 4200 mm
121008-06200	FixZ-15 Upper system profile18 6200 mm
121009-04200	FixZ-15 Lower system profile18 4200 mm
121009-06200	FixZ-15 Lower system profile18 6200 mm

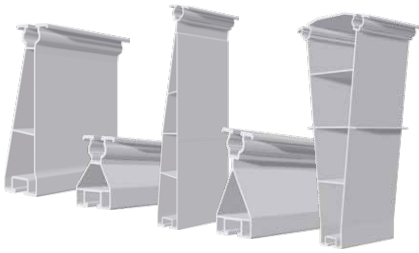


FlatGrid

FlatGrid	
128039-006	Base profile for FlatGrid 6000 mm
128039-203	Base profile for FlatGrid 2150 mm
128039-212	Base profile for FlatGrid 2650 mm
128039-214	Base profile for FlatGrid 4200 mm
128039-215	Base profile for FlatGrid 6300 mm
128039-216	Base profile for FlatGrid 3150 mm

FIXGRID

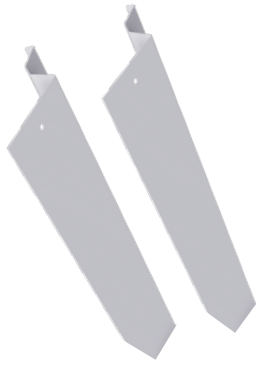
Load-optimized flat roof systems



FixZ profile pieces incl. FixGrid screw-in connector

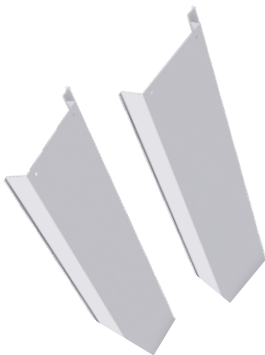
163900-011	FixZ-7 upper system profile 96 mm with connector	PU:25
163900-012	FixZ-7 lower system profile 96 mm with connector	PU:25
163900-001	FixZ-15 upper system profile 96 mm with connector	PU:25
163900-002	FixZ-15 lower system profile 96 mm with connector	PU:25
163900-003	FixZ-15 center system profile 96 mm with connector	PU:25

For high snow loads up to 5.4 kN / m²



FixZ-7 Windsafe

169018-170	FixZ-7 Windsafe18 up to 1700 mm
169018-210	FixZ-7 Windsafe18 up to 2067 mm



FixZ-15 Windsafe

169019-170	FixZ-15 Windsafe18 up to 1700 mm
169019-210	FixZ-15 Windsafe18 up to 2067 mm



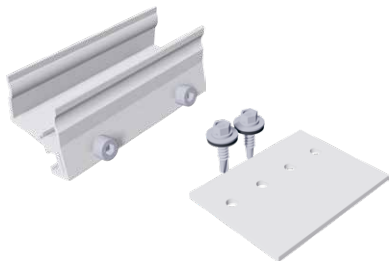
Ballast shafts

169020-170	FixGrid ballast shaft18 up to 1700 mm
169020-210	FixGrid ballast shaft18 up to 2067 mm

The appropriate module clamps can be found in the module clamps section

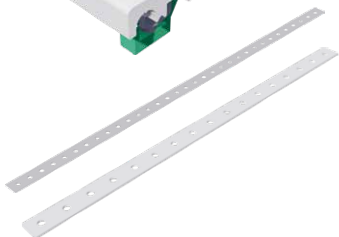
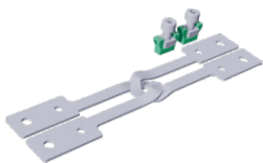
FIXGRID

Load-optimized flat roof systems



Connectors

129002-002	Connector E Solo, SoloPlus, FixZ-7, FixZ-15, pre-assembled	PU:100
129019-001	Additional connector for FixZ-15 upper set	PU:100



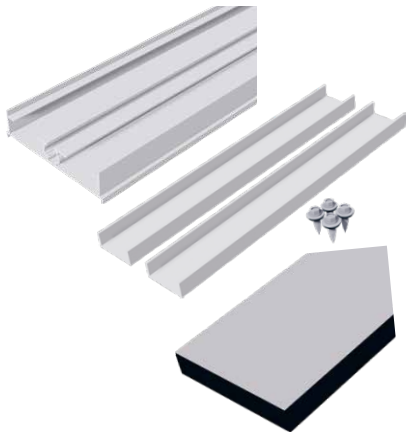
Other accessories

129063-000	Rapid cross connector	PU:200
129062-001	Tension connector set M8	PU:100
135003-005	Lightning protection clamp M8	PU:25
119015-002	Punched mounting tape 6-50 m	
119015-003	Punched mounting tape 16-50 m	

The appropriate module clamps can be found in the module clamps section, and the module support profiles in the profiles section

FLATGRID

Load-optimized flat roof systems



Base profile FlatGrid for structure protection strips

128039-006	Base profile FlatGrid 6 m	
129078-000	Internal connector for FlatGrid set	PU:25
169004-003	Structure protection mat 300 x 110 x 20 mm SK blank	



Rapid²⁺ L bracket connector and accessories

119026-001	Rapid ²⁺ L bracket connector	PU:100
943308-120	Allen screw M8 x 20	PU:100
943922-008	Washer M8	PU:100
943914-008	Square nut M8	PU:100
129010-008	Click-in module for nut M8	PU:100



Other accessories

129062-001	Tension connector set M8	PU:100
169017-000	Additional tub	PU:50
169004-007	Structure protection mat 230 x 200 x 6	



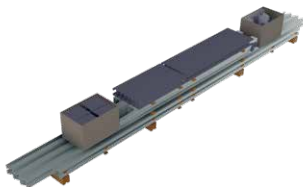


PVMAX ENERGY-KITS

PVMax Energy-Kits

PVMAX

PVMax Energy-Kits



146003-019 PVMax kit expansion support

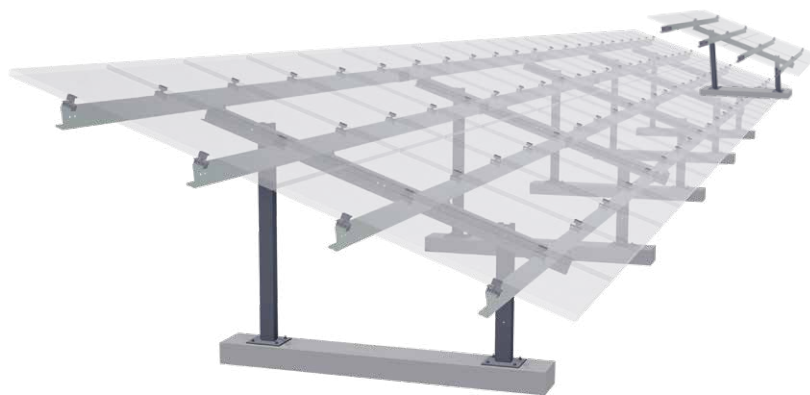
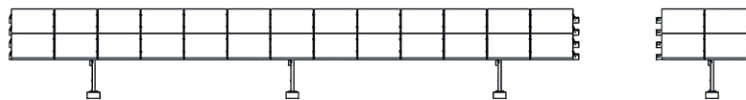
146003-021 PVMax kit of 11 with 3 supports

146003-022 PVMax kit of 11 with 4 supports

146003-024 PVMax kit of 22 with 5 supports

146003-025 PVMax kit of 22 with 6 supports

146003-026 PVMax kit of 22 with 7 supports



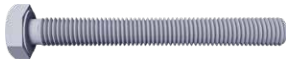


SCREWS AND SMALL PARTS

Screws and small parts

SCREWS AND SMALL PARTS

Screws and small parts



Hexagon screw, VA

943610-025 M10 x 25	PU:100
943610-030 M10 x 30	PU:100
943610-035 M10 x 35	PU:100
943610-045 M10 x 45	PU:100



Square head screw, VA

943410-025 M10 x 25	PU:100
----------------------------	--------



Flange nut with locking teeth

943912-008 M8	PU:100
943912-010 M10	PU:100
943912-012 M12	PU:100



Washer large, VA

943922-008 M8	PU:100
943922-010 M10	PU:100
943922-012 M12	PU:100



Allen screw

943308-120 M8 x 20 with teeth under head	PU:100
943308-135 M8 x 35 with teeth under head	PU:200

SCREWS AND SMALL PARTS

Screws and small parts



943914-008 Square nut M8, V4A Fits all Schletter system profiles, can be combined with Klicknut M8 and click-in component	PU:100
---	--------

129010-008 Click-in module for nut M8 For simplified insertion of the M8 square nut at any location on the KlickIn nut M8	PU:100
---	--------

943914-010 Square nut M10, V4A	PU:100
---------------------------------------	--------

943914-108 Special square nut M8, V4A (shape as in M10) Fits all Schletter system profiles, can be combined with Klicknut M10 and click-in components	PU:100
---	--------

129010-001 KlickIn click-in module for nut M10 For simplified insertion of the M10 square nut at any location on the KlickIn nut M10	PU:100
--	--------

Nut self-securing, V4A

943911-008 M8	PU:500
----------------------	--------

943911-010 M10	PU:200
-----------------------	--------

943911-012 M12	PU:200
-----------------------	--------

Threaded screw, self-grooving, VA

For steel starting at 1.5 mm



943718-064 8 x 64	PU:100
--------------------------	--------

943718-100 8 x 100	PU:100
---------------------------	--------

943718-125 8 x 125	PU:100
---------------------------	--------

943718-150 8 x 150	PU:100
---------------------------	--------

943718-200 8 x 200	PU:50
---------------------------	-------

SCREWS AND SMALL PARTS

Screws and small parts



Fastening screws for metal components and plates

943755-925 Drill screw 5.5 x 25 with gasket	PU:100
--	--------

943000-360 Thin sheet metal screw 6.0 x 25 A2 with gasket	PU:100
--	--------

943772-019 Repair screw 7.2 x 19 self-grooving FABA-A A2	PU:500
---	--------

EPDM rubber inlay 3 mm self-adhesive, 50 m roll, UV-resistant

e.g. for trapezoidal sheet clamps or for laminate modules



973000-041 EPDM rubber self-adhesive 48 mm wide, reel 50 m

Wood screw

For non-boarded roofs, we recommend at least 80 mm, for roofs with boarding and counter-battens, at least 120 mm!

Wood screw with plate head, VA



Example

943208-080 8 x 80	PU:100
--------------------------	--------

943208-100 8 x 100	PU:100
---------------------------	--------

943208-120 8 x 120	PU:50
---------------------------	-------

Wood screw with plate head, galvanized

942208-080 8 x 80	PU:50
--------------------------	-------

942208-100 8 x 100	PU:50
---------------------------	-------

942208-120 8 x 120	PU:50
---------------------------	-------

Seal for plate head screws



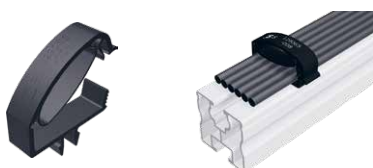
119016-000 dm 8 EPDM

SCREWS AND SMALL PARTS

Screws and small parts

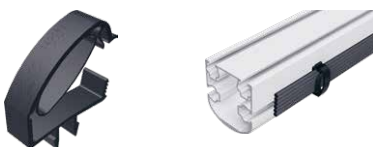
Cable routing

Cable fastener made of UV- and temperature-resistant plastic



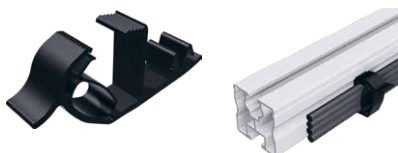
129065-008 Proklip-Multi 8

Profiles	Systems	Cable quantity
Click or screw channel M8, module support profile S, module support profiles Solo, Eco05, FixZ-7, FixZ-15	FixZ-7, FixZ-15, system FS, carport, special projects	approx. 6* PU:100



129065-010 Proklip-Multi 10

Profiles	Systems	Cable quantity
BF binder, T binder, click or screw channel M10	IsoTop, PvMax3, system FS (all versions), special projects	approx. 6* PU:100



129065-001 Proklip-Multi 10S

Profiles	Systems	Cable quantity
Solo and screw channel M10	-	approx. 4* PU:100



129065-000 Proklip-Multi C

Profiles	Systems	Cable quantity
Solo	Grid standard, special projects	approx. 6* PU:100



149023-001 Fastening binder 1.0–3.0 mm, upper guide

Fastening on edges with a width of 1.0–3.0 mm; cable tie length: Cable tie length: 200 mm PU:100



149023-002 Fastening binders 1.0–3.0 mm, lateral guide

Fastening on edges with a width of 1.0–3.0 mm; cable tie length: Cable tie length: 200 mm PU:100

* Starting with a 6 mm² cable with a 6 mm cable diameter



For competent and comprehensive advice in planning your system, and for questions about logistics and order processing, our employees are gladly available to you.

SCHLETTER

The Solar Mounting Group

SCHLETTER SOLAR GMBH (Headquarters)
Alustraße 1
83527 Kirchdorf
GERMANY

Order processing

Tel: +49 8072 9191 - 480
Fax: +49 8072 9191 - 9480
orderings@schletter-group.com

Technical advice and queries

Tel: +49 8072 9191 - 201
Fax: +49 8072 9191 - 9201
inquiries@schletter-group.com
info@schletter-group.com
www.schletter-group.com

We reserve the right to changes, including technical modification.