



# COMPONENT OVERVIEW 2020

**SCHLETTER**  
The Solar Mounting Group

## **General information**

### **Materials:**

Roof hooks and their main components:  
Highgrade steel with zinc flake coating,  
stainless steel 1.4301 or aluminium

Screws:  
Stainless steel A2 or better

Sheet metal parts:  
Stainless steel 1.4301 or aluminium.

Module clamps:  
Aluminium

Rubber seal:  
EPDM gasket (UV-resistant)

Deviating materials are described with the individual items.

### **Planning aid:**

Configuration and structural dimensioning with the  
Schletter Configurator

### **Structural analysis:**

Static calculation according to the current country-specific standards (in Germany EN 1991, EC1). Structural analysis supplement for the dimensioning of the number of required fastening points, based on the structural analysis. Please make sure you observe the structural analysis information in each case! The verification of the adhesive force of the roof to the substructure is not included in the general structural analysis appendices!

Production-specific tolerances are to be considered with all dimension specifications.

On customer request, all companies of the Schletter Group can purchase goods from the Schletter factories in Germany and China (Shanghai). Both factories have been certified according to ISO 9001. Further details about the certifications are available on the respective Schletter websites.

# TABLE OF CONTENTS

## Component overview

### Presentation

Brochures and software	06
Sample case	07

### Roof hooks

Standard roof hooks	10
Rapid <sup>2+</sup> roof hooks	11
Roof Hooks HSL	12
Alu-Tile	13
Roof hooks, special design	14
Roof hook accessories	17

### Special fasteners

Special fasteners for roofs with steel substructure	20
Special fasteners for roofs with wooden substructure	22
Special fastener accessories	23
Sheet metal seam clamps	24
System VarioFix / SingleFix / FixZ mounting kit / EcoRapid	26
ClampFit / Fix T-K	27

### Module clamps

Module clamps for framed modules	30
Clamps for laminate modules	32
Laminate clamp accessories	34

### Profiles

Module support and mounting profiles	38
Profile accessories	40

### Supports

Flat roof system supports	44
Special supports and facade supports	47
Support accessories	49

### Load-optimized flat roof systems

FixGrid	52
FlatGrid	55

### PVMax Energy-Kits

PVMax Energy-Kits	58
-------------------	----

### Screws and small parts

Screws and small parts	62
------------------------	----





# PRESENTATION

Brochures and Software

Sample case

# BROCHURES AND SOFTWARE

## Presentation



The latest brochures, product sheets, mounting instructions and further technical information as well as software can always be found in the download area of [www.schletter-group.com](http://www.schletter-group.com)

Upon request, we will also gladly send you our brochures in digital format.

# SAMPLE CASE

## Presentation



Similar illustration

Upon request!

---

**195000-297** Sample case of roof and standard systems  
Contains samples of major products in the  
Schletter mounting systems

---



# ROOF HOOKS

**Standard roof hooks**

**Rapid<sup>2+</sup> roof hooks**

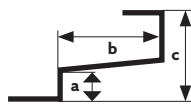
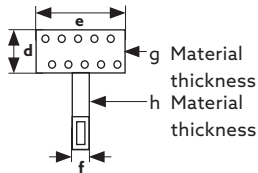
**Alu-Tile**

**Roof hooks, special design**

**Roof hooks accessories**

# STANDARD ROOF HOOKS

## Roof hooks



Dimension drawing for the tables

- All roof hooks made of stainless steel
- Adjustable hooks completely pre-assembled

Wood screws, square head bolts (M10 x 25 mm) and flange nuts must be ordered separately.

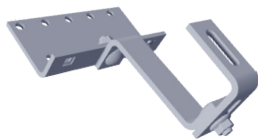


### Roof hooks Eco S

- VA quality
- Welded
- Symmetric bar arrangement

**100004-000** Eco S 135 roof hooks (normal height 135 mm)

	a	b	c	d	e	f	g	h	
mm	45	110	135	60	150	35	5	6	PU:20



### Universal roof hooks

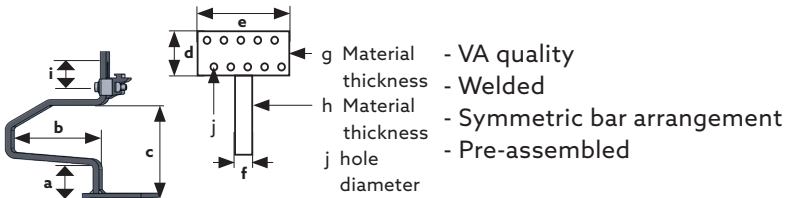
- VA quality
- Variable bar arrangement
- Adjustable at the front and rear
- Center bar can be used in three positions

**100001-000** Universal roof hooks (Frankfurt pantile or interlocking tiles)

	a	b	c	d	e	f	g	h	
mm	42-52	115	102-135	74	150	30	5	6	PU:20

# RAPID<sup>2+</sup> ROOF HOOKS

## Roof hooks



Dimensional drawing for the tables



### 101001-000 Rapid<sup>2+</sup> Roof hooks 45

	a	b	c	d	e	f	g	h	i	
mm	45	110	118	60	150	35	5	6	30	PU:20

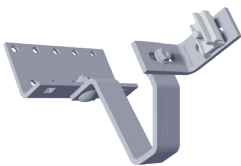
Comparable to: Eco S 100004-000



### 101002-000 Rapid<sup>2+</sup> Roof hooks 35

	a	b	c	d	e	f	g	h	i	
mm	35	110	108	60	150	35	5	6	30	PU:20

Like 101001-000, but 35 mm / 1.38-inch fork height for low battens



### 101004-000 Rapid<sup>2+</sup> Universal Roof hooks

	a	b	c	d	e	f	g	h	i	
mm	40-52	110	115-127	74	150	35	5	6	30	PU:10

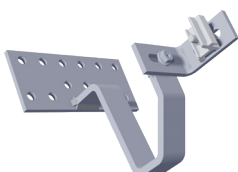
Universally adjustable, for vertical rail mounting  
 Comparable to: Universal 100001-000



### 101005-000 Rapid<sup>2+</sup> Max Roof hook

	a	b	c	d	e	f	g	h	i	
mm	45	120	125	80	180	35	6	8	30	PU:10

Like 101001-000, but bar 35 x 8 mm / 1.38 x 0.31 inches for heavy snow loads



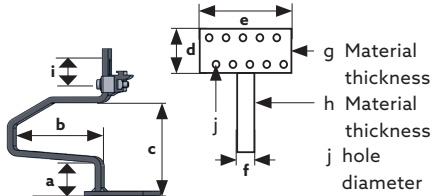
### 101006-000 Rapid<sup>2+</sup> MaxV Roof hooks

	a	b	c	d	e	f	g	h	i	
mm	45	120	125	80	180	35	6	8	30	PU:10

Like 101005-000, but for vertical rail mounting

# ROOF HOOKS HSL

New: Made of Highgrade Steel, especially for high snow loads



Dimensional drawing for the tables

- Material: High Grade Steel, welded
- Coating: Zinc Flace Coating
- Symmetric bar arrangement
- Pre-assembled
- Available from Q2/2020



## 100018-000 Roof hook Eco S HSL

	a	b	c	d	e	f	g	h	i	j	
mm	45	110	120	80	150	35	5	6		9	PU:20



## 101001-002 Roof hook Rapid2+ 45 HSL

	a	b	c	d	e	f	g	h	i	j	
mm	45	110	115	80	150	35	5	6	30	9	PU:20



## 101005-004 Dachhaken Rapid2+ Max HSL

	a	b	c	d	e	f	g	h	i	j	
mm	45	132	114	80	150	35	6	8	30	9	PU:10



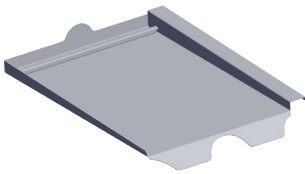
# ALU-TILE

## Roof hooks

Replaces a complete roof tile. Please order roof hook set separately. Especially for areas with heavy snow loads.

System hooks with sheet metal replacement tiles in aluminum, EPDM screw seal, load support in plastic with A2 stainless-steel screw.

### Sheet metal replacement tiles

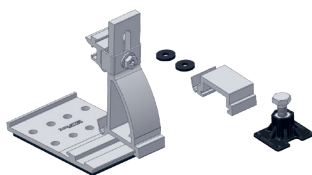


Manufacturer	Item No.	PU:10
<b>Braas</b>		
Frankfurt pantile	103005-003	
Taunus pantile	103005-011	
Harz pantile	103005-022	
Tegalit	103005-025	
Topas 13V	103005-067	
<b>Erlus</b>		
Interlocking tile	103005-002	
Large interlocking tile	103005-007	
Large interlocking tile XXL	103005-010	
E58	103005-015	
Forma	103005-024	
Linea	103005-049	
Reform pantile XXL	103005-057	
<b>Eternit</b>		
Heidelberger	103005-006	
<b>Meindl</b>		
Rustico	103005-004	
MZ3 NEW	103005-112	

Other sheet metal replacement tiles are available on request.

### Alu-Tile roof hook set

Consists of system hooks, screw seals and load support




---

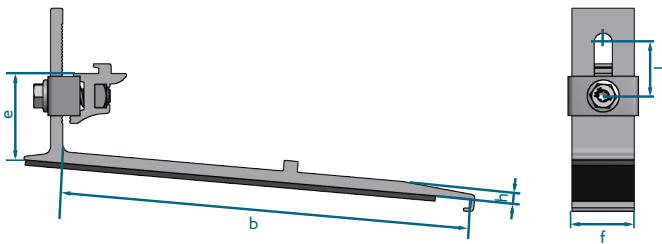
**103006-000** Alu-Tile roof hook set

PU:10

---

# ROOF HOOKS, SPECIAL DESIGN

## Roof hooks

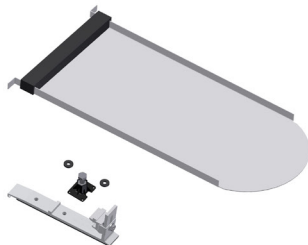


### Sheet metal replacement tiles and roof hook sets for Rapid beaver tail incl. mounting set

**109016-007** BEZ Rapid beaver tail AL 180 x 380 PU:20

**109019-000** Roof hooks for Rapid beaver tail AL inst. PU:20

	a	b	c	d	e	f	g	h	i
mm	-	228	-	-	48	35	-	7	30



**109016-009** BEZ Rapid beaver tail AL 170 x 380 PU:20

**109019-000** Roof hooks for Rapid beaver tail AL inst. PU:20

	a	b	c	d	e	f	g	h	i
mm	-	228	-	-	48	35	-	7	30



**109016-010** BEZ Rapid beaver tail AL 190 x 400 PU:20

**109019-002** Roof hooks for beaver tail Rapid inst. 190 x 400 PU:20

	a	b	c	d	e	f	g	h	i
mm	-	250	-	-	50	35	-	6	30



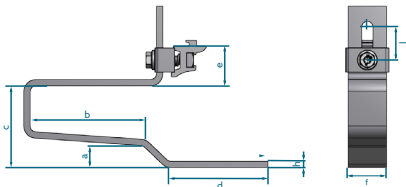
**109016-008** BEZ Rapid beaver tail Cu 180 x 380 PU:20

**109019-001** Roof hooks for Rapid beaver tail Cu inst. PU:20

	a	b	c	d	e	f	g	h	i
mm	-	232	-	-	50	35	-	6	30

# ROOF HOOKS, SPECIAL DESIGN

## Roof hooks



### Rapid 2L roof hooks

Roof hooks for system roofs made of roof insulation elements

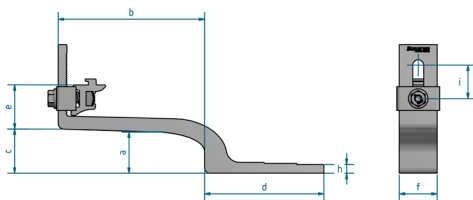
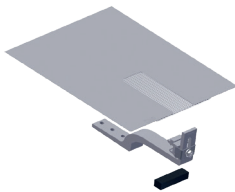


101008-000 Rapid 2L roof hooks										PU:20
	a	b	c	d	e	f	g	h	i	
mm	20	104	74	92	36	35	-	6	30	

101008-002 Rapid 2LV roof hooks										PU:20
	a	b	c	d	e	f	g	h	i	
mm	20	100	74	92	46	35	-	6	30	

### Rapid<sup>2+</sup> Slate roof hooks

- Quick and easy mounting
- Suitable for many shingle types
- Roof panel with flexible corrugated strip
- Direct load on rafters



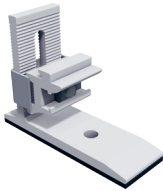
**109019-004** Roof hook Rapid<sup>2+</sup> Slate125 (shingleless)

**109017-010** Shingle for Roof hook Rapid<sup>2+</sup> Slate125

For slate overlaps up to 125mm										PU:20
	a	b	c	d	e	f	g	h	i	
mm	28	135	41	110	41	35	-	8	30	

# ROOF HOOKS, SPECIAL DESIGN

## Roof hooks

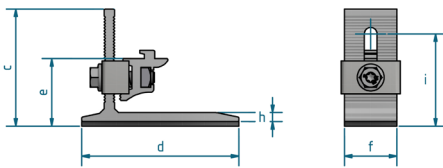


### Rapid<sup>2+</sup> SML

119026-101 Rapid<sup>2+</sup> SML roof hooks

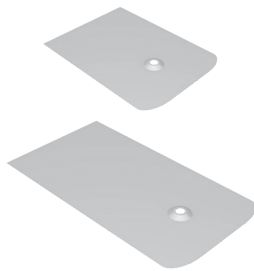
PU:20

	a	b	c	d	e	f	g	h	i
mm			78	105	45	35		6	29



### SlatePlan for attachment with hanger bolts

SlatePlan can be used on roofs with shingle covers, such as from bitumen, fiber cement or slate, for connection by hanger bolt systems. For accessories, see hanger bolts (page 20)



109017-000 SlatePlan with seal 270 x 200 x 0.5 mm

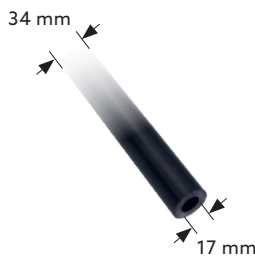
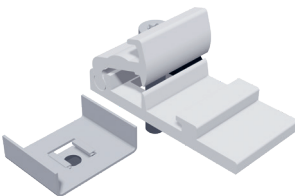
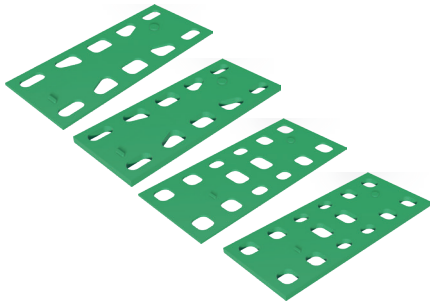
PU:50

109017-001 SlatePlan with seal 370 x 200 x 0.5 mm

PU:50

# ROOF HOOK ACCESSORIES

## Roof hooks



<b>973000-017*</b> EcoG / EcoS 2 mm shim / Rapid Standard	PU:50
<b>973000-018*</b> EcoG / EcoS 5 mm shim / Rapid Standard	PU:50
<b>973000-019*</b> Shim 2 mm VaMax / Rapid Max	PU:50
<b>973000-020*</b> Shim 5 mm VaMax / Rapid Max	PU:50

Spacer for roof hook mounting

\* Products run out and will be replaced by 1 universal shim starting in Q2

<b>973000-075</b> Spacer plate roof hook 2,5/5 mm*	PU:50
--	-------

\* Available from Q2/2020

<b>973000-683</b> Roof hook sealing tape grey TP600 10 m	PU:15
--	-------

<b>109008-003</b> RapFix - extension for Eco roof hooks Especially for roof hooks that are not available as a rapid version	PU:50
---	-------

<b>925120-002</b> Spacer sleeve, plastic, 1 m - For rafter insulation - Usable as a spacer sleeve for rafter insulation in connection with extra-long fastening screws - Plastic version prevents cold bridges - Cut to desired length - Order screws separately! - Observe reduced load for roof hooks!	
---	--

<b>109010-000</b> Additional bracket Iso07 For roof hook fastening, system Iso07	PU:20
---	-------



# SPECIAL FASTENERS

Special fasteners for roofs with wooden substructure

Special fasteners for roofs with steel substructure

Special fastener accessories

Sheet metal seam clamps

System VarioFix / SingleFix / FixZ mounting kit / EcoRapid

ClampFit / Fix T-K

# SPECIAL FASTENERS FOR ROOFS WITH STEEL SUBSTRUCTURE

## Roof cladding: Corrugated roofs & trapezoidal sheet



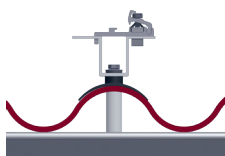
### Threaded screw, self-grooving, VA

<b>943763-064</b> 6,3x64	PU:100
<b>943763-115</b> 6,3x115	PU:100
<b>943763-150</b> 6,3x150	PU:100
<b>943763-200</b> 6,3x200	PU:50
<hr/>	
<b>943718-064*</b> 8 x 64	PU:100
<b>943718-100*</b> 8 x 100	PU:50
<b>943718-125*</b> 8 x 125	PU:100
<b>943718-150*</b> 8 x 150	PU:100
<b>943718-200*</b> 8 x 200	PU:50

\*Article expires. Available as long as stocks last.

+ adapter

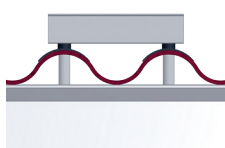
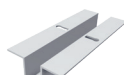
= ready to use  
Fastening systems



<b>119033-002</b> Uno M8 universal adapter	PU:50
<b>119005-000</b> Seal cap for corrugated sheets 5 / 6 / 8	PU:50
<b>119004-002</b> Spacer sleeve AL 65 x 20*	PU:50
<b>119004-003</b> Spacer alu 995 x 20**	PU:30

\* for profile height 57 mm

\*\* for other profile heights, these must be cut to size at the construction site  
Rapid cross connectors (item 129063-000) must be ordered separately



<b>119033-005</b> Duo M8 universal adapter	PU:50
<b>119005-000</b> Seal cap for corrugated sheets 5 / 6 / 8	PU:50
<b>119004-002</b> Spacer sleeve AL 65 x 20*	PU:50
<b>119004-003</b> Spacer alu 995 x 20**	PU:30

For each mounting point, 2 threaded screws must be calculated

\* for profile height 57 mm

\*\* For other profile heights, these must be cut to size at the construction site

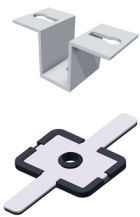


# SPECIAL FASTENERS FOR ROOFS WITH STEEL SUBSTRUCTURE

## Roof cladding: Corrugated roofs & trapezoidal sheet

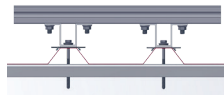
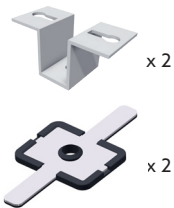
+ adapter

= ready to use  
Fastening systems



<b>119033-002</b> Uno M8 universal adapter	PU:50
<b>119005-001</b> Universal sphere cap with EPDM	PU:50

Rapid cross connectors (item 129063-000) must be ordered separately



<b>119033-002</b> Uno M8 universal adapter	PU:50
<b>119005-001</b> Universal sphere cap with EPDM	PU:50

For each mounting point, 2 threaded screws must be calculated

Additionally, the upper profile and the necessary mounting screws must be considered

# SPECIAL FASTENERS FOR ROOFS WITH WOODEN SUBSTRUCTURE

## Roof cladding: Corrugated roofs & trapezoidal sheet

For corrugated sheets (such as those of fiber cement) or trapezoidal sheet roofs, corrugated roof fastening sets consisting of a special hanger bolt with EPDM seal and a mounting plate are used. Please note that illustrations and thread lengths may vary!



### Hanger bolt

<b>110010-200</b> Hanger bolt set 10 x 200 mounted	PU:50
<b>110012-200</b> Hanger bolt set 12 x 200 mounted	PU:50
<b>110012-300</b> Hanger bolt set 12 x 300 mounted	PU:50

Hanger bolt set pre-assembled with vulcanized EPDM seal (UV resistant) and 3 flange nuts in V4A, mounted

+ adapter

= ready to use  
Fastening systems



<b>119002-000</b> Mounting plate for hanger bolt M10 / M12 For hanger bolts M10 / M12, loose, aluminum 120 x 60 x 6 mm	PU:50
---	-------



<b>119001-000</b> KlickTop extension part for hanger bolt For M10 / M12 hanger bolts, loose, aluminum	PU:50
--	-------



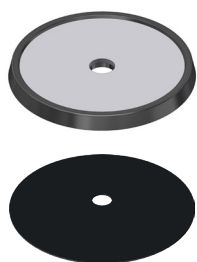
<b>119033-004</b> Universal adapter Duo M10 / M12 For M10 / M12 hanger bolts, loose, aluminum	PU:50
--	-------



<b>119033-001</b> Universal adapter Uno M10 / M12 For M10 / M12 hanger bolts, loose, aluminum	PU:50
--	-------

Rapid cross connectors (item 129063-000) must be ordered separately

# SPECIAL FASTENER ACCESSORIES



## FixPlan - in connection with hanger bolts

The alternative for level sheet metal roofs for which fastening on the fold is not possible (e.g. titanium zinc sheet roofs)

<b>114003-000</b> FixPlan sealing plate	PU:50
<b>114004-000</b> Bituplan additional seal for FixPlan For mounting with bitumen coverings	PU:100

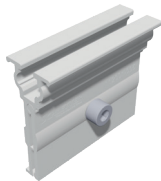
# SHEET METAL SEAM CLAMPS

## Special fasteners

Please note: The tightening torque must be limited so that the sheet metal seam does not become distorted and the thermal lengthening of the sheets is not prevented!



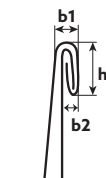
<b>112001-000</b> Seam clamp 503 VA for standing seam roof	PU:50
Please note: For titanium zinc sheets, it must be checked whether the fold can be stressed!	



<b>112001-005</b> Folding clamp 503 Rapid for standing seam roof	PU:50
--	-------



<b>112001-010</b> Seam clamp 504 AL KK for standing seam roof	PU:50
Especially suitable for double standing seam roofs made of titanium zinc sheet	



Possible dimensions of the border fold (left dimension drawing)  
 $h = 11-13 \text{ mm}$ ,  $b1 = 4-6 \text{ mm}$ ,  $b2 = \text{max. } 3 \text{ mm}$

The 504 seam clamp was developed together with the Rheinzink company for use on double standing seam roofs made of titanium zinc sheet and approved by Rheinzink. The profiles mounted on the standing seam clamps must not exceed a length of about 3 m without thermal separation.



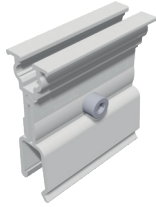
<b>112002-003</b> Seam clamp 510 AL Rapid for KalZip and similar	PU:50
--	-------



<b>112003-003</b> Seam clamp 520 Rapid Zambelli RibRoof465 and similar	PU:50
--	-------

# SHEET METAL SEAM CLAMPS

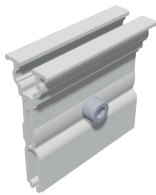
## Special fasteners



---

**112004-002** Folding clamp 522 AL Rapid Zambelli RibRoof500 and similar PU:50

---



---

**112006-002** Seam clamp 524 Rapid Fischer KlipTec and similar PU:50

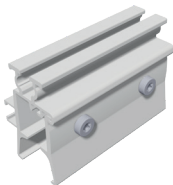
---



---

**112007-000** Seam clamp 525 VA for Domico Domitec for Domico and similar PU:50

---



---

**112012-002** Seam clamp 540 AL KK for KlipLok 700 / 406 for KlipLok 700 HiStrength, Classic 700 / 406 and similar PU:50

---

# SYSTEM VARIOFIX / SINGLEFIX / FIXZ MOUNTING KIT / ECORAPID

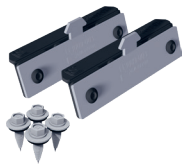
## Special fasteners

The universal trapezoidal sheet fastener for steel and aluminum sheet from 0.5 mm. Pay special attention to the usage notes!



<b>113014-000</b> EcoRapid - clamp directly on frame for corrugation heights from 22 mm Screws must be ordered separately as needed Item number: 943000-360 EcoRapid on edge of module field: 2 screws EcoRapid in center of module field: 1 screw	PU:200
--	--------

SingleFix-V Solo



<b>113009-103</b> SingleFix-V Solo 20-pair set for corrugation heights from 22 mm (2 x SingleFix-V Solo, 4 sheet metal screws) Used in connection with Solo mounting rails, for example	PU:50
---	-------

+ Profile

= Mounting kit



<b>120011-00450</b> EcoLight 450 mm module support profile	PU:50
--	-------



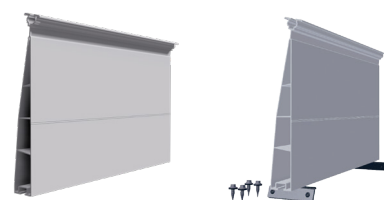
<b>121010-202</b> FixZ-7 system profile 18 lower 450 mm	PU:25
---	-------



<b>121001-202</b> FixZ-7 upper system profile 18 450 mm	PU:25
---	-------



<b>121009-202</b> FixZ-15 system profile 18 lower 450 mm	PU:25
--	-------



<b>121008-202</b> FixZ-15 upper system profile 18 450 mm	PU:25
--	-------

# CLAMPFIT

## Special fasteners



The cost-optimized trapezoidal sheet fastener system for steel and aluminum sheet from 0.5 mm. Pay special attention to the usage notes!

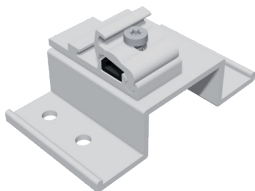
---

<b>130004-100</b> ClampFit fastener	PU:100
Module clamps additionally needed depending on the frame height	

---

# FIX T-K

## Special fasteners



The innovative fastener for bitumen roofs on wood casings

---

<b>119014-012</b> Fix T-K	PU:50
---------------------------	-------

---





# MODULE CLAMPS

Module clamps for framed modules

Clamps for laminate modules

Laminate clamp accessories

# MODULE CLAMPS FOR FRAMED MODULES

## Module clamps

### Rapid16 AL module clamp system

Clamping length: 50 mm



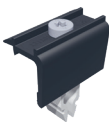
AL blank	Black anodized item designation	Installation type
<b>131121-002</b>	<b>131121-902</b> Rapid16 center clamp 40-50	<b>V + H</b> PU:100



<b>131101-002</b>	<b>131101-902</b> End clamp Rapid16 40-50	<b>V + H</b> PU:50
-------------------	---	--------------------



<b>131121-001</b>	<b>131121-901</b> Rapid16 center clamp 30-40	<b>V + H</b> PU:100
-------------------	--	---------------------



<b>131101-001</b>	<b>131101-901</b> Rapid16 end clamp 30-40	<b>V</b> PU:50
-------------------	---	----------------



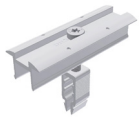
<b>131101-003</b>	<b>131101-903</b> Rapid16 end clamp 30-40	<b>H</b> PU:50
-------------------	---	----------------

# MODULE CLAMPS FOR FRAMED MODULES

## Module clamps

### Rapid16 AL module clamp system

Clamping length: 100 mm



AL blank	Black anodized item designation	Installation type
131121-112	Middle clamp Rapid16 40 - 50 L	V + H PU:100



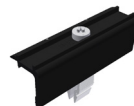
131121-111	Middle clamp Rapid16 30 - 40 L	V + H PU:100
------------	--------------------------------	--------------



131101-101	131101-191 End clamp Rapid16 30 - 40 L	V PU:50
------------	--	---------



131101-102	131101-192 End clamp Rapid16 40 - 50 L	V + H PU:50
------------	--	-------------



131101-103	131101-193 End clamp Rapid16 H 30 - 40 L	H PU:50
------------	--	---------

# CLAMPS FOR LAMINATE MODULES

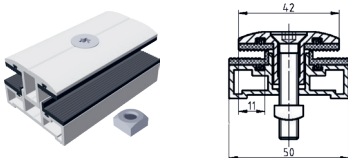
## Module clamps

### Profi and Eco laminate series

For various module thicknesses  
 Attention: Observe the tightening torque!  
 (see also: General information on laminate mounting)

### Profi laminate series

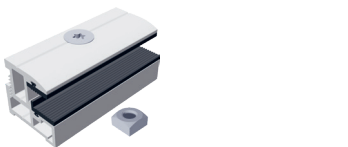
for laminate thicknesses 3-14 mm  
 Glass inset: Profi narrow 11 mm, Profi wide 15 mm  
 Length: 80 mm, clearance between modules: approx. 20 mm  
 Incl. countersunk screw and square nut




---

<b>132201-308</b> Profi center clamp narrow 3-8 mm set	PU:200
--	--------

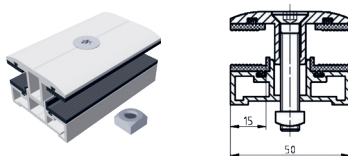
---




---

<b>132101-308</b> Profi end clamp narrow 3-8 mm set	PU:200
---	--------

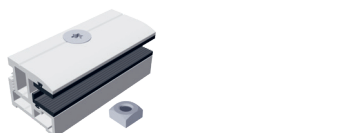
---




---

<b>132202-308</b> Profi center clamp wide 3-8 mm set	PU:200
--	--------

---



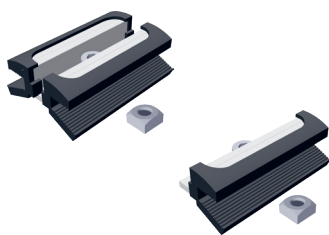

---

<b>132102-308</b> Profi end clamp wide 3-8 mm set	PU:200
---	--------

---

# CLAMPS FOR LAMINATE MODULES

## Module clamps



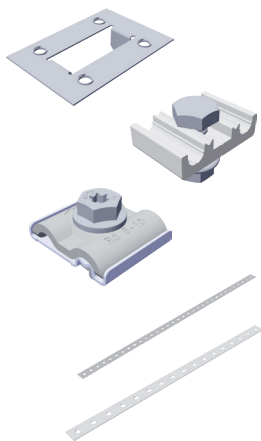
### Eco laminate series

Length of aluminum clamp: 70 mm, glass inset: 11 mm, clearance between modules: 22 mm, (no compression of the laminate)

<b>133264-168</b> Eco6-S4 center clamp laminate 6.8 mm set	PU:100
<b>133164-168</b> Eco6-S4 end clamp laminate 6.8 mm set	PU:100

With M8 x 20 accessories, without click-in component  
With aluminum clamp surrounding EPDM rubber

Certified clamps for First Solar series 4 modules made of highly insulated EPDM rubber material. The certification can be found in the download area at [www.schletter-group.com](http://www.schletter-group.com)



### Lightning protection and potential equalization

<b>135004-000</b> Ground plate for module grounding, not for laminate clamps!	PU:100
<b>135003-000</b> Lightning protection clamp for 8 mm AL completely pre-assembled (for DM 8 mm wiring)	PU:20
<b>135003-002</b> Grounding and lightning protection clamp VA M8 Clamping range Rd 8-10 mm Connection single / multi-wire 4-50 mm <sup>2</sup>	PU:20
<b>119015-002</b> Punched mounting tape 6-50 m	
<b>119015-003</b> Punched mounting tape 16-50 m lightning resistant	

# LAMINATE CLAMP ACCESSORIES

## Module clamps



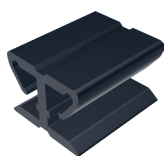
AL blank

---

**139004-000** Bearing plate for Eco module clamp  
For raising the bearing surface

---

PU:200



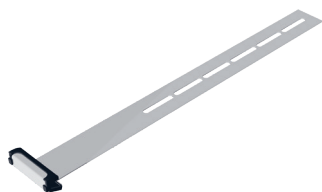
---

**973000-012** Spacer

For laminate thicknesses 4-10 mm

---

PU:100



---

AL blank

**139008-006** Safety hooks, laminate 3-8 mm

---

PU:100







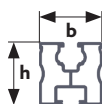
# PROFILES

Module support and mounting profiles

Profile accessories

# MODULE SUPPORT AND MOUNTING PROFILES

## Profiles



The series for the proven click system with the right accessories

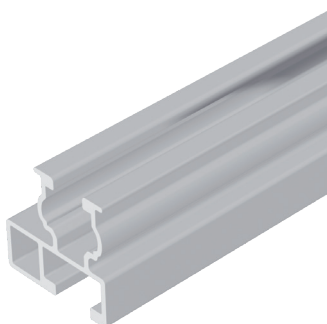
Mounting with square nut, click system and Rapid2+

- Structural analysis tables for cross beams

- Load determination software on the Internet:

[www.schletter-group.com](http://www.schletter-group.com)

(Customer area > Software Download)



### Module support profile EcoLight

Mechanical connection

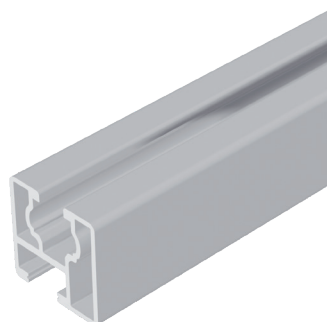
Upper: KlickNut M8  
Lower: Screw channel M10

b	h
30 mm	30 mm

AL blank

**120011-04300** 4.3 m

**120011-05300** 5.3 m



### Module support profile Eco05

Mechanical connection

Upper: KlickNut M8  
Lower: Screw channel M10

b	h
30 mm	30 mm

AL blank

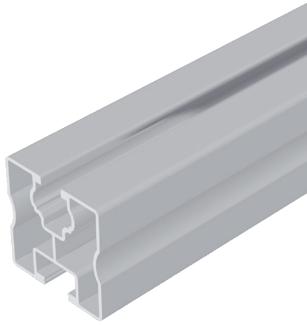
**120001-04300** 4.3 m

**120001-05300** 5.3 m

For small spans

# MODULE SUPPORT AND MOUNTING PROFILES

## Profiles



### Module support profile Solo

Mechanical connection

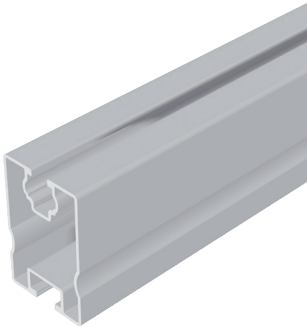
Upper: KlickNut M8  
Lower: Screw channel M10

b	h
40 mm	40 mm

AL blank

Black anodized

<b>120005-02100</b>	2.1 m		
<b>120005-03200</b>	3.2 m		
<b>120005-04300</b>	4.3 m	<b>120005-94300</b>	4.3 m
<b>120005-05300</b>	5.3 m	<b>120005-95300</b>	5.3 m
<b>120005-006</b>	6.0 m		
<b>120005-06200</b>	6.2 m		



### Module support profile SoloPlus

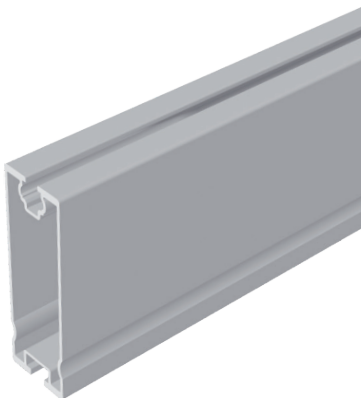
Mechanical connection

Upper: KlickNut M8  
Lower: Screw channel M10

b	h
40 mm	60 mm

AL blank

<b>120006-04300</b>	4.3 m
<b>120006-05300</b>	5.3 m



### Solo XL module support profile

Mechanical connection\*

Upper: KlickNut M8  
Lower: Screw channel M10

b	h
40 mm	120 mm

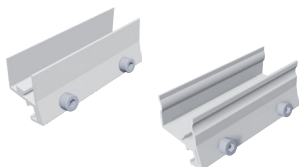
AL blank

<b>120006-05300</b>	5.3 m
---------------------	-------

\* The lower M10 screw channel is only suitable for connecting with square head bolt 943410-025. Not for Rapid cross connector, KlickTop or similar connections.

# PROFILE ACCESSORIES

## Profiles



<b>129001-003</b>	E Eco connector, pre-assembled	PU:100
<b>129002-002</b>	E Solo, SoloPlus connector FixZ-7, FixZ-15, pre-assembled	PU:100



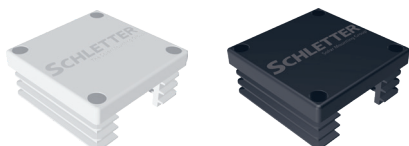
<b>129001-004</b>	Eco internal connector set	PU:50
-------------------	----------------------------	-------



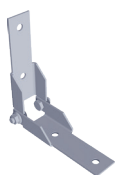
<b>129060-001</b>	Solo slide-in connector set	PU:50
-------------------	-----------------------------	-------



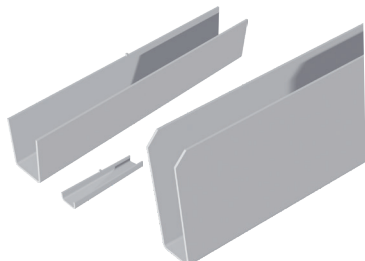
AL blank	Black anodized		
<b>129063-000</b>	<b>129063-900</b>	Rapid cross connector Completely pre-assembled for Klicknut M8 for cross rail system See Rapid cross connector product sheet	PU:200



Grey	Black		
<b>129011-000</b>	<b>129011-900</b>	Solo plastic end cap	PU:100



<b>129061-001</b>	Ridge connector set	PU:50
-------------------	---------------------	-------



<b>129001-007</b>	SoloPlus internal connector	PU:25
<b>129001-008</b>	EcoLight internal connector	PU:25
<b>129001-009</b>	SoloXL internal connector set	PU:25



<b>119033-002</b>	Uno M8 universal adapter	PU:50
-------------------	--------------------------	-------

As clamp dowel for special applications in connection with the Eco05 module support profile the profile must be fastened with M8 screws to the clamp dowel





# SUPPORTS

Flat roof system supports

Special supports and facade supports

Support accessories

# FLAT ROOF SYSTEM SUPPORTS

## Supports

For all types of flat roof fasteners, depending on the substrate and fastener, diagonal reinforcement of the support lattice is a good idea.

If necessary, these reinforcements can be built on site, e.g., using our punched mounting tape 16-50 m 119015-003.

Other angles 15°–60° in 5° increments possible.

Mounting beams

Floor profile



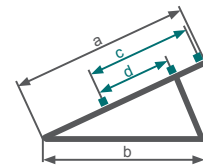
Series 07



Light U



Profi U



### Support, 30° angle other angles 15°–60° in 5° increments possible



#### Flat roof support Light U (30 degree, AL, screwed)

Series 07	Module height	a	b	c	d
<b>150001-130</b>	approx. 1300 mm	1195 mm	1193 mm	850 mm	600 mm
<b>150001-150</b>	approx. 1500 mm	1445 mm	1193 mm	960 mm	690 mm



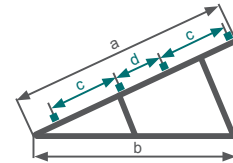
#### Flat roof support Profi U (30 degree, AL, screwed)

Series 07	Module height	a	b	c	d
<b>151001-150</b>	approx. 1500 mm	1445 mm	1193 mm	960 mm	690 mm



# FLAT ROOF SYSTEM SUPPORTS

## Supports



### Support, 30° angle other angles 15°-30° in 5° increments possible



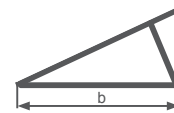
#### Flat roof support Profi U (30 degree, AL, screwed)

Series 07	Module height	a	b	c	d
151001-220	approx. 2200 mm	2200 mm	1995 mm	747 mm	460 mm



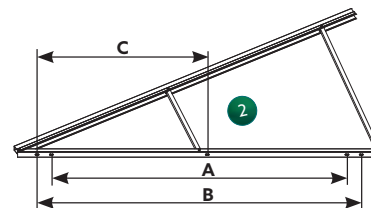
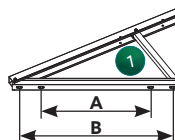
#### Flat roof support XL (30 degree, AL, screwed)

Series 07	Module height	a	b	c	d
155001-320	approx. 3200 mm	3195 mm	2635 mm	1072 / 1080 mm	733 mm



#### Hole distances in mm

Module height approx.	1300/1500	2200	3200
Floor profile (b)	1193	1995	2635
Dimensional drawing	1	1	2
A	743	1545	2185
B	963	1765	2405
C			1202,5



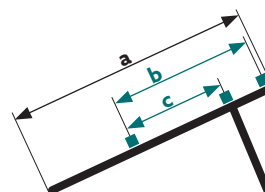
The slots in the floor profile allow an mounting tolerance of + / -8 mm

# FLAT ROOF SYSTEM SUPPORTS

## Supports

### Upper support parts for use with systems or continuous beams

When putting systems together, the fitting sets must be considered when ordering.



### Support, 30° angle other angles 15°–60° in 5° increments possible



Flat roof support upper part Light

Series 07	Module height	a	b	c
<b>150003-001</b>	approx. 1300 mm	1195 mm	850 mm	600 mm
<b>150003-002</b>	approx. 1500 mm	1445 mm	960 mm	690 mm

# SPECIAL SUPPORTS AND FACADE SUPPORTS

## Supports

### Special supports



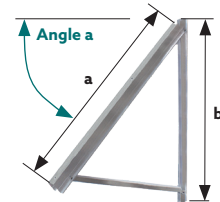
Green roof support for modules up to 1.6 m  
Angle of 15°-30° in 5° increments possible

Please give the desired inclination!  
AL, screwed, approx. 0.4 m ground clearance  
Length of mounting beam: approx. 1.3 m

---

**152001-000** Green roof systems for modules up to 1.6 m

---



Facade supports for modules 1.3-1.6 m  
Angles of 30°-75° in 5° increments possible

For choosing the support angle, please indicate the module inclination to the horizontal

#### Facade supports

	Module height	a	b
<b>156001-160</b> Facade support for modules 1.3-1.6m	approx. 1.3-1.6 m	1285 mm	1323 mm

# SUPPORT ACCESSORIES

## Supports



### Filling finish

---

<b>159000-027</b> Concrete block filling finish set18	PU:100
---	--------

---

---

<b>160002-001</b> SolRack AL (1 plate) Material thickness: 1 mm Surface: 0.55 m <sup>2</sup>	
--	--

---

### SolRack accessories

(2 units per plate required!)

---

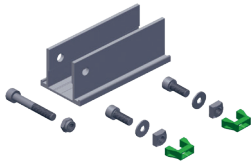
<b>943610-025</b> Screw M10 x 25 hexagonal DIN933 A2 GMB	PU:100
<b>943922-010</b> Large washer M10 DIN9021 A2	PU:100
<b>943912-010</b> Flange nut M10 with locking teeth DIN6923 A4	PU:100

---

# SUPPORT ACCESSORIES

## Supports

When putting systems together, the fitting sets must be considered when ordering. The mounting material is provided for M8 click channels.



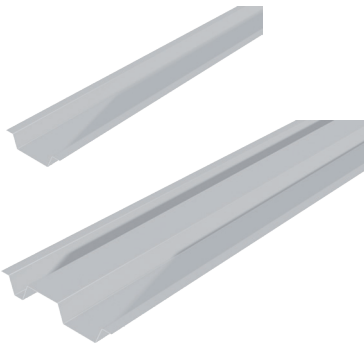
---

<b>159000-002</b> Fitting set 07 for CompactVario, simple	PU:100
For assembly of upper support parts on profiles, such as profile family 05	

---

## Windsafe (depending on project)

Rear wall paneling for elevated PV systems to reduce wind loads



---

<b>164160-180</b> Windsafe Vario AL 160 x 1830 mm
<b>164250-180</b> Windsafe Vario Alu 250 x 1830 mm

---



# LOAD-OPTIMIZED FLAT ROOF SYSTEMS

FixGrid

FlatGrid

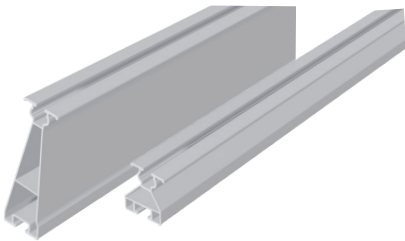
# FIXGRID

## Load-optimized flat roof systems



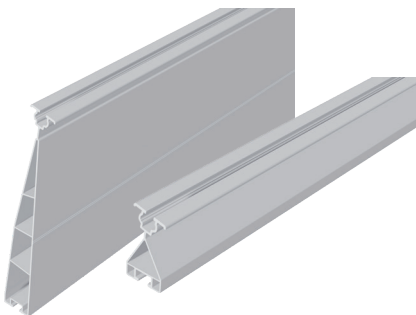
### FixGrid18

<b>163000-201</b>	FixGrid18 100 kit 6° set of 2
<b>163000-202</b>	FixGrid18 100 kit 6° set of 3
<b>163000-203</b>	FixGrid18 100 Kit 13° set of 2
<b>163000-204</b>	FixGrid18 100 kit 13° set of 3
<b>163000-301</b>	FixGrid18 South kit 6° set of 2
<b>163000-302</b>	FixGrid18 South kit 6° set of 3
<b>163000-303</b>	FixGrid18 South kit 13° set of 2
<b>163000-304</b>	FixGrid18 South kit 13° set of 3



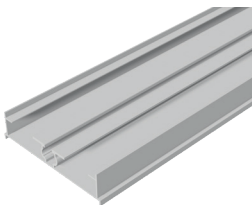
### FixZ-7

<b>121001-04300</b>	FixZ-7 Upper system profile 4300 mm
<b>121001-05300</b>	FixZ-7 Upper system profile 5300 mm
<b>121010-04300</b>	FixZ-7 Lower system profile18 4300 mm
<b>121010-05300</b>	FixZ-7 Lower system profile18 5300 mm



### FixZ-15

<b>121008-04300</b>	FixZ-15 Upper system profile18 4300 mm
<b>121008-05300</b>	FixZ-15 Upper system profile18 5300 mm
<b>121009-04300</b>	FixZ-15 Lower system profile18 4300 mm
<b>121009-05300</b>	FixZ-15 Lower system profile18 5300 mm



## FlatGrid

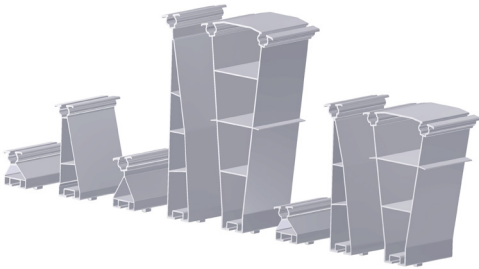
### FlatGrid

<b>128039-006</b>	Base profile for FlatGrid 6000 mm
<b>128039-203</b>	Base profile for FlatGrid 2150 mm
<b>128039-212</b>	Base profile for FlatGrid 2650 mm
<b>128039-214</b>	Base profile for FlatGrid 4200 mm
<b>128039-215</b>	Base profile for FlatGrid 6300 mm
<b>128039-216</b>	Base profile for FlatGrid 3150 mm



# FIXGRID

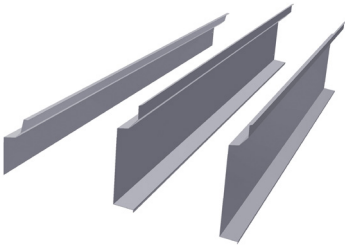
## Load-optimized flat roof systems



### FixZ profile pieces incl. FixGrid screw-in connector

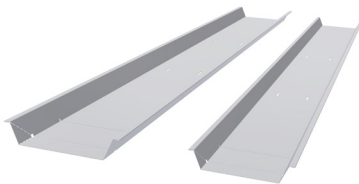
<b>163900-011</b>	FixZ-7 upper system profile 96 mm with connector	PU:25
<b>163900-012</b>	FixZ-7 lower system profile 96 mm with connector	PU:25
<b>163900-021</b>	FixZ-10 upper system profile 96 mm with connector	PU:25
<b>163900-022</b>	FixZ-10 lower system profile 96 mm with connector	PU:25
<b>163900-023</b>	FixZ-10 center system profile 96 mm with connector	PU:25
<b>163900-001</b>	FixZ-15 upper system profile 96 mm with connector	PU:25
<b>163900-002</b>	FixZ-15 lower system profile 96 mm with connector	PU:25
<b>163900-003</b>	FixZ-15 center system profile 96 mm with connector	PU:25

For high snow loads up to 5.4 kN / m<sup>2</sup>



### FixZ-7 Windsafe

<b>169018-170</b>	FixZ-7 Windsafe up to 1700 mm
<b>169018-210</b>	FixZ-7 Windsafe up to 2067 mm
<b>169017-170</b>	FixZ-10 Windsafe up to 1700 mm
<b>169017-210</b>	FixZ-10 Windsafe up to 2067 mm
<b>169019-170</b>	FixZ-15 Windsafe up to 1700 mm
<b>169019-210</b>	FixZ-15 Windsafe up to 2067 mm



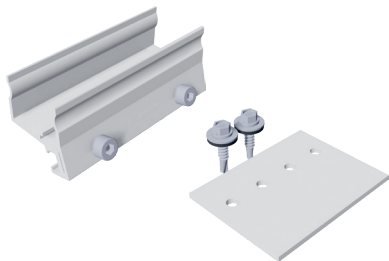
### Ballast shafts

<b>169020-170</b>	FixGrid ballast shaft18 up to 1700 mm
<b>169020-210</b>	FixGrid ballast shaft18 up to 2067 mm

The appropriate module clamps can be found in the module clamps section

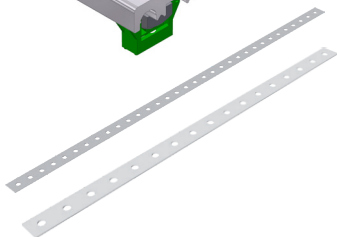
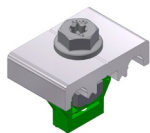
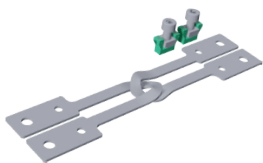
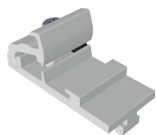
# FIXGRID

## Load-optimized flat roof systems



### Connectors

<b>129002-002</b>	Connector E Solo, SoloPlus, FixZ-7, FixZ-15, pre-assembled	PU:100
<b>129019-001</b>	Additional connector for FixZ-15 upper set	PU:100



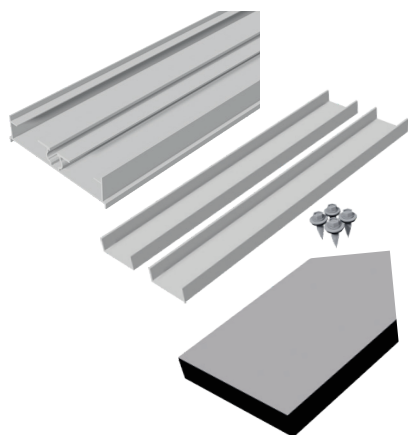
### Other accessories

<b>129063-000</b>	Rapid cross connector	PU:200
<b>129062-001</b>	Tension connector set M8	PU:100
<b>135003-005</b>	Lightning protection clamp M8	PU:25
<b>119015-002</b>	Punched mounting tape 6-50 m	
<b>119015-003</b>	Punched mounting tape 16-50 m	

The appropriate module clamps can be found in the module clamps section, and the module support profiles in the profiles section

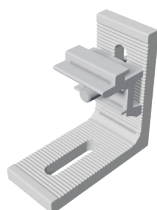
# FLATGRID

## Load-optimized flat roof systems



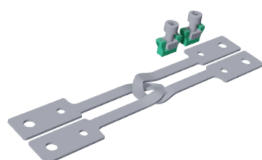
### Base profile FlatGrid for structure protection strips

<b>128039-006</b>	Base profile for FlatGrid 6000 m	
<b>128039-203</b>	Base profile for FlatGrid 2150 m	
<b>128039-212</b>	Base profile for FlatGrid 2650 m	
<b>128039-214</b>	Base profile for FlatGrid 4200 m	
<b>128039-215</b>	Base profile for FlatGrid 6300 m	
<b>128039-216</b>	Base profile for FlatGrid 3150 m	
<b>129078-000</b>	Internal connector for FlatGrid set	PU:25
<b>169004-003</b>	Surface protect.mat 300x110x20mm SK cut	PU:25
<b>169004-008</b>	Surface protect.mat 300x110x20FH SK cut (On request, please note longer delivery time)	PU:25



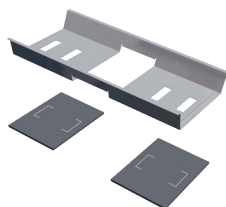
### Rapid<sup>2+</sup> L bracket connector and accessories

<b>119026-001</b>	Rapid <sup>2+</sup> L bracket connector	PU:100
<b>943308-120</b>	Allen screw M8 x 20	PU:100
<b>943922-008</b>	Washer M8	PU:100
<b>943914-008</b>	Square nut M8	PU:100
<b>129010-008</b>	Click-in module for nut M8	PU:100



### Other accessories

<b>129062-001</b>	Tension connector set M8	PU:100
<b>169017-000</b>	Additional tub	PU:50
<b>169004-007</b>	Structure protection mat 230 x 200 x 6	





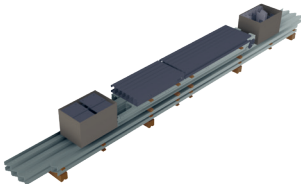
# PVMAX ENERGY-KITS

PVMax Energy-Kits

PVMAX ENERGY-KITS

# PVMAX

## PVMax Energy-Kits



---

**146003-019** PVMax kit expansion support

---

**146003-021** PVMax kit of 11 with 3 supports

---

**146003-022** PVMax kit of 11 with 4 supports

---

**146003-024** PVMax kit of 22 with 5 supports

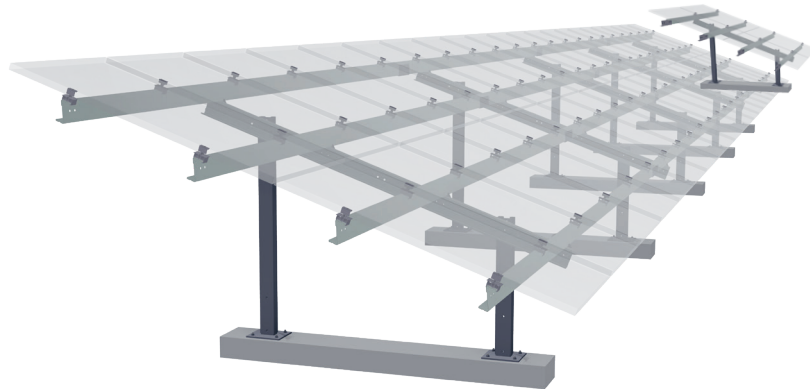
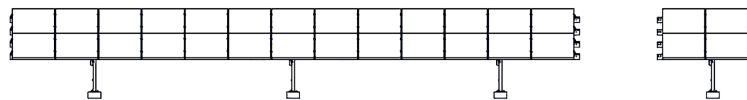
---

**146003-025** PVMax kit of 22 with 6 supports

---

**146003-026** PVMax kit of 22 with 7 supports

---









# SCREWS AND SMALL PARTS

Screws and small parts

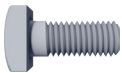
# SCREWS AND SMALL PARTS

## Screws and small parts



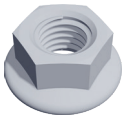
### Hexagon screw, VA

<b>943610-025</b> M10 x 25	PU:100
<b>943610-030</b> M10 x 30	PU:100
<b>943610-035</b> M10 x 35	PU:100
<b>943610-045</b> M10 x 45	PU:100



### Square head screw, VA

<b>943410-025</b> M10 x 25	PU:100
----------------------------	--------



### Flange nut with locking teeth

<b>943912-008</b> M8	PU:100
<b>943912-010</b> M10	PU:100



### Washer large, VA

<b>943922-008</b> M8	PU:100
<b>943922-010</b> M10	PU:100



### Allen screw

<b>943308-120</b> M8 x 20 bottom gear teeth	PU:100
<b>943308-135</b> M8 x 35 bottom gear teeth	PU:200

# SCREWS AND SMALL PARTS

## Screws and small parts



<b>943914-008</b>	Square nut M8, V4A Fits all Schletter system profiles, can be combined with Klicknut M8 and click-in component	PU:100
-------------------	---	--------

<b>129010-008</b>	Click-in module for nut M8 For simplified insertion of the M8 square nut at any location on the KlickIn nut M8	PU:100
-------------------	---	--------

<b>943914-010</b>	Square nut M10, V4A	PU:100
-------------------	---------------------	--------

<b>943914-108</b>	Special square nut M8, V4A (shape as in M10) Fits all Schletter system profiles, can be combined with Klicknut M10 and click-in components	PU:100
-------------------	---	--------

<b>129010-001</b>	KlickIn click-in module for nut M10 For simplified insertion of the M10 square nut at any location on the KlickIn nut M10	PU:100
-------------------	--	--------

### Nut self-securing, V4A

<b>943911-008</b>	M8	PU:500
<b>943911-010</b>	M10	PU:200

### Threaded screw, self-grooving, VA

For steel starting at 1.5 mm



<b>943763-064</b>	6,3 x 64	PU:100
<b>943763-115</b>	6,3 x 115	PU:100
<b>943763-150</b>	6,3 x 150	PU:100
<b>943763-200</b>	6,3 x 200	PU:50

<b>943718-064*</b>	8 x 64	PU:100
<b>943718-100*</b>	8 x 100	PU:50
<b>943718-125*</b>	8 x 125	PU:100
<b>943718-150*</b>	8 x 150	PU:100
<b>943718-200*</b>	8 x 200	PU:50

\*Article expires. Available as long as stocks last.

# SCREWS AND SMALL PARTS

## Screws and small parts



### Fastening screws for metal components and plates

<b>943755-925</b>	Drill screw 5.5 x 25 with gasket	PU:100
<b>943000-360</b>	Thin sheet metal screw 6.0 x 25 A2 with gasket	PU:100

<b>943772-019</b>	Repair screw 7.2 x 19 self-grooving FABA-A A2	PU:500
-------------------	---	--------

### EPDM rubber inlay 3 mm self-adhesive, 50 m roll, UV-resistant

e.g. for trapezoidal sheet clamps or for laminate modules



<b>973000-041</b>	EPDM rubber self-adhesive 48 mm wide, reel 50 m
-------------------	---

### Wood screw

For non-boarded roofs, we recommend at least 80 mm, for roofs with boarding and counter-battens, at least 120 mm!

### Wood screw with plate head, VA



Example

<b>943208-080</b>	8 x 80	PU:100
<b>943208-100</b>	8 x 100	PU:100
<b>943208-120</b>	8 x 120	PU:50

### Wood screw with plate head, galvanized

<b>942208-080</b>	8 x 80	PU:50
<b>942208-100</b>	8 x 100	PU:50
<b>942208-120</b>	8 x 120	PU:50

### Seal for plate head screws



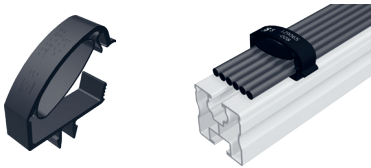
<b>119016-000</b>	dm 8 EPDM
-------------------	-----------

# SCREWS AND SMALL PARTS

## Screws and small parts

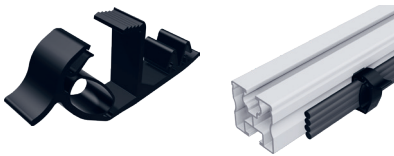
### Cable routing

Cable fastener made of UV- and temperature-resistant plastic



#### 129065-008 Proklip-Multi 8

Profiles	Systems	Cable quantity	
Click or screw channel M8, module support profile S, module support profiles Solo, Eco05, FixZ-7, FixZ-15	FixZ-7, FixZ-15, system FS, carport, special projects	approx. 6*	PU:100



#### 129065-001 Proklip-Multi 10S

Profiles	Systems	Cable quantity	
Solo and screw channel M10	-	approx. 4*	PU:100



#### 149023-001 Fastening binder 1.0–3.0 mm, upper guide

Fastening on edges with a width of 1.0–3.0 mm; cable tie length: Cable tie length: 200 mm

PU:100



#### 149023-002 Fastening binders 1.0–3.0 mm, lateral guide

Fastening on edges with a width of 1.0–3.0 mm; cable tie length: Cable tie length: 200 mm

PU:100

\* Starting with a 6 mm<sup>2</sup> cable with a 6 mm cable diameter





For competent and comprehensive advice in planning your system, and for questions about logistics and order processing, our employees are gladly available to you.

**SCHLETTER**  
*The Solar Mounting Group*

SCHLETTER SOLAR GMBH (Headquarters)  
Alustraße 1  
83527 Kirchdorf  
GERMANY

[www.schletter-group.com](http://www.schletter-group.com)

We reserve the right to changes, including technical modification.